



[Go to Product page](#)

Datasheet for ABIN2781550

anti-SLC41A3 antibody (C-Term)

1 Image

Overview

Quantity:	100 µL
Target:	SLC41A3
Binding Specificity:	C-Term
Reactivity:	Human, Cow, Dog, Guinea Pig, Mouse, Rabbit, Rat, Horse, Zebrafish (Danio rerio)
Host:	Rabbit
Clonality:	Polyclonal
Conjugate:	This SLC41A3 antibody is un-conjugated
Application:	Western Blotting (WB)

Product Details

Immunogen:	The immunogen is a synthetic peptide directed towards the C terminal region of human SLC41A3
Sequence:	WHQALDPDNH CIPYLTGLGD LLGSSSVGHT AAVPRRCTAS PGWGGLIQPFI
Predicted Reactivity:	Cow: 100%, Dog: 100%, Guinea Pig: 100%, Horse: 100%, Human: 100%, Mouse: 100%, Rabbit: 100%, Rat: 100%, Zebrafish: 92%
Characteristics:	This is a rabbit polyclonal antibody against SLC41A3. It was validated on Western Blot using a cell lysate as a positive control.
Purification:	Affinity Purified

Target Details

Target:	SLC41A3
---------	---------

Target Details

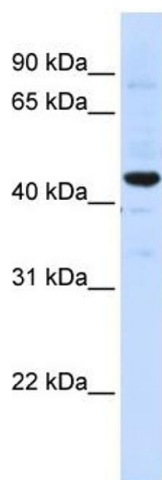
Alternative Name:	SLC41A3 (SLC41A3 Products)
Background:	<p>SLC41A3 is a multi-pass membrane protein. It belongs to the SLC41A transporter family. The exact function of SLC41A3 remains unknown.</p> <p>Alias Symbols: FLJ20473, SLC41A1-L2</p> <p>Protein Interaction Partner: PDZD3, REL, APP, UBC, MAPK6,</p> <p>Protein Size: 507</p>
Molecular Weight:	55 kDa
Gene ID:	54946
NCBI Accession:	NM_001008485 , NP_001008485
UniProt:	Q96GZ6

Application Details

Application Notes:	Optimal working dilutions should be determined experimentally by the investigator.
Comment:	Antigen size: 507 AA
Restrictions:	For Research Use only

Handling

Format:	Liquid
Concentration:	Lot specific
Buffer:	Liquid. Purified antibody supplied in 1x PBS buffer with 0.09 % (w/v) sodium azide and 2 % sucrose.
Preservative:	Sodium azide
Precaution of Use:	This product contains Sodium azide: a POISONOUS AND HAZARDOUS SUBSTANCE which should be handled by trained staff only.
Handling Advice:	Avoid repeated freeze-thaw cycles.
Storage:	-20 °C
Storage Comment:	For short term use, store at 2-8°C up to 1 week. For long term storage, store at -20°C in small aliquots to prevent freeze-thaw cycles.



Western Blotting

Image 1. WB Suggested Anti-SLC41A3 Antibody Titration: 0.2-1 ug/ml ELISA Titer: 1:62500 Positive Control: HeLa cell lysate SLC41A3 is supported by BioGPS gene expression data to be expressed in HeLa