

Datasheet for ABIN2781552  
**anti-SLC35D3 antibody (N-Term)**[Go to Product page](#)

## 1 Image

## Overview

Quantity:	100 µL
Target:	SLC35D3
Binding Specificity:	N-Term
Reactivity:	Human, Mouse, Rat, Cow, Rabbit, Dog, Guinea Pig, Horse, Zebrafish (Danio rerio)
Host:	Rabbit
Clonality:	Polyclonal
Conjugate:	This SLC35D3 antibody is un-conjugated
Application:	Western Blotting (WB)

## Product Details

Immunogen:	The immunogen is a synthetic peptide directed towards the N terminal region of human SLC35D3
Sequence:	RYQFSFLTLV QCLTSSTAAL SLELLRRLGL IAVPPFGLSL ARSFAGVAVL
Predicted Reactivity:	Cow: 100%, Dog: 100%, Guinea Pig: 100%, Horse: 100%, Human: 100%, Mouse: 100%, Rabbit: 100%, Rat: 100%, Zebrafish: 79%
Characteristics:	This is a rabbit polyclonal antibody against SLC35D3. It was validated on Western Blot using a cell lysate as a positive control.
Purification:	Affinity Purified

## Target Details

Target:	SLC35D3
---------	---------

## Target Details

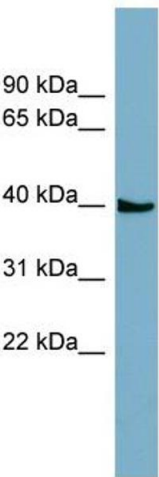
Alternative Name:	SLC35D3 ( <a href="#">SLC35D3 Products</a> )
Background:	SLC35D3 may play a role in hemostasis as a regulator of the biosynthesis of platelet-dense granules. Alias Symbols: FRCL1, MGC102873, bA55K22.3 Protein Size: 416
Molecular Weight:	44 kDa
Gene ID:	340146
NCBI Accession:	<a href="#">NM_001008783</a> , <a href="#">NP_001008783</a>
UniProt:	<a href="#">Q5M8T2</a>

## Application Details

Application Notes:	Optimal working dilutions should be determined experimentally by the investigator.
Comment:	Antigen size: 416 AA
Restrictions:	For Research Use only

## Handling

Format:	Liquid
Concentration:	Lot specific
Buffer:	Liquid. Purified antibody supplied in 1x PBS buffer with 0.09 % (w/v) sodium azide and 2 % sucrose.
Preservative:	Sodium azide
Precaution of Use:	This product contains Sodium azide: a POISONOUS AND HAZARDOUS SUBSTANCE which should be handled by trained staff only.
Handling Advice:	Avoid repeated freeze-thaw cycles.
Storage:	-20 °C
Storage Comment:	For short term use, store at 2-8°C up to 1 week. For long term storage, store at -20°C in small aliquots to prevent freeze-thaw cycles.



**Western Blotting**

**Image 1.** WB Suggested Anti-SLC35D3 Antibody Titration: 0.2-1 ug/ml ELISA Titer: 1:62500 Positive Control: ACHN cell lysate