

Datasheet for ABIN2781554
anti-SLC5A9 antibody (N-Term)[Go to Product page](#)

1 Image

Overview

Quantity:	100 µL
Target:	SLC5A9
Binding Specificity:	N-Term
Reactivity:	Human, Horse
Host:	Rabbit
Clonality:	Polyclonal
Conjugate:	This SLC5A9 antibody is un-conjugated
Application:	Western Blotting (WB)

Product Details

Immunogen:	The immunogen is a synthetic peptide directed towards the N terminal region of human SLC5A9
Sequence:	MSKELAAMGP GASGDGVRTE TAPHIALDSR VGLHAYDISV VVIYFVFVIA
Predicted Reactivity:	Horse: 86%, Human: 100%
Characteristics:	This is a rabbit polyclonal antibody against SLC5A9. It was validated on Western Blot using a cell lysate as a positive control.
Purification:	Affinity Purified

Target Details

Target:	SLC5A9
---------	--------

Target Details

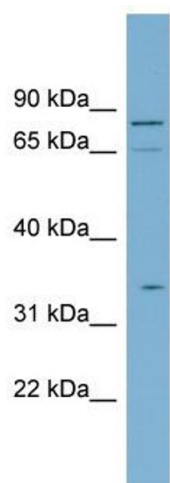
Alternative Name:	SLC5A9 (SLC5A9 Products)
Background:	SLC5A9 is involved in sodium-dependent transport of D-mannose, D-glucose and D-fructose. Alias Symbols: MGC132517, MGC132523, SGLT4 Protein Size: 699
Molecular Weight:	76 kDa
Gene ID:	200010
NCBI Accession:	NM_001011547 , NP_001011547
UniProt:	Q2M3M2

Application Details

Application Notes:	Optimal working dilutions should be determined experimentally by the investigator.
Comment:	Antigen size: 699 AA
Restrictions:	For Research Use only

Handling

Format:	Liquid
Concentration:	Lot specific
Buffer:	Liquid. Purified antibody supplied in 1x PBS buffer with 0.09 % (w/v) sodium azide and 2 % sucrose.
Preservative:	Sodium azide
Precaution of Use:	This product contains Sodium azide: a POISONOUS AND HAZARDOUS SUBSTANCE which should be handled by trained staff only.
Handling Advice:	Avoid repeated freeze-thaw cycles.
Storage:	-20 °C
Storage Comment:	For short term use, store at 2-8°C up to 1 week. For long term storage, store at -20°C in small aliquots to prevent freeze-thaw cycles.



Western Blotting

Image 1. WB Suggested Anti-SLC5A9 Antibody Titration:
0.2-1 ug/ml ELISA Titer: 1:312500 Positive Control: PANC1
cell lysate