



[Go to Product page](#)

Datasheet for ABIN2781558

anti-GLUT4 antibody (N-Term)

5 Images

Overview

Quantity:	100 µL
Target:	GLUT4 (SLC2A4)
Binding Specificity:	N-Term
Reactivity:	Human, Mouse, Rat, Rabbit, Cow, Goat, Horse, Dog, Guinea Pig, Zebrafish (Danio rerio)
Host:	Rabbit
Clonality:	Polyclonal
Conjugate:	This GLUT4 antibody is un-conjugated
Application:	Western Blotting (WB)

Product Details

Immunogen:	The immunogen is a synthetic peptide directed towards the N terminal region of human SLC2A4
Sequence:	LQFGYNIGVI NAPQKVIEQS YNETWLGRQG PEGPSSIPPG TLTLWALSV
Predicted Reactivity:	Cow: 100%, Dog: 100%, Goat: 100%, Guinea Pig: 100%, Horse: 100%, Human: 100%, Mouse: 93%, Rabbit: 100%, Rat: 100%, Zebrafish: 79%
Characteristics:	This is a rabbit polyclonal antibody against SLC2A4. It was validated on Western Blot using a cell lysate as a positive control.
Purification:	Affinity Purified

Target Details

Target:	GLUT4 (SLC2A4)
---------	----------------

Target Details

Alternative Name: [SLC2A4 \(SLC2A4 Products\)](#)

Background: SLC2A4 is a member of the solute carrier family 2 (facilitated glucose transporter) family and functions as an insulin-regulated facilitative glucose transporter. In the absence of insulin, this integral membrane protein is sequestered within the cells of muscle and adipose tissue. Within minutes of insulin stimulation, the protein moves to the cell surface and begins to transport glucose across the cell membrane. Mutations in this gene have been associated with noninsulin-dependent diabetes mellitus. This gene is a member of the solute carrier family 2 (facilitated glucose transporter) family and encodes a protein that functions as an insulin-regulated facilitative glucose transporter. In the absence of insulin, this integral membrane protein is sequestered within the cells of muscle and adipose tissue. Within minutes of insulin stimulation, the protein moves to the cell surface and begins to transport glucose across the cell membrane. Mutations in this gene have been associated with noninsulin-dependent diabetes mellitus (NIDDM). Publication Note: This RefSeq record includes a subset of the publications that are available for this gene. Please see the Entrez Gene record to access additional publications.

Alias Symbols: GLUT4

Protein Interaction Partner: UBC, FAR1, P3H1, FKBP10, ESYT2, GNL3L, CRNKL1, STRN3, ARFIP1, SDF2L1, P3H4, KLHL41, PDIA6, MVP, RAB7A, UBE2N, PSMD7, PRKAR1A, NSF, IDH1, HSP90AA1, HK2, GAPDH, DLD, CTSD, SERPINH1, BSG, ARF5, ARF3, ACTN1, ACTN4, ACOX1, DSK2, UBI4, C1QTNF5, MAP1S, EHD2, UBE

Protein Size: 509

Molecular Weight: 55 kDa

Gene ID: 6517

NCBI Accession: [NM_001042](#), [NP_001033](#)

UniProt: [P14672](#)

Pathways: [AMPK Signaling](#), [Carbohydrate Homeostasis](#), [Proton Transport](#), [Brown Fat Cell Differentiation](#), [Warburg Effect](#)

Application Details

Application Notes: Optimal working dilutions should be determined experimentally by the investigator.

Comment: Antigen size: 509 AA

Restrictions: For Research Use only

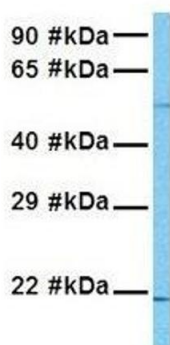
Handling

Format:	Liquid
Concentration:	Lot specific
Buffer:	Liquid. Purified antibody supplied in 1x PBS buffer with 0.09 % (w/v) sodium azide and 2 % sucrose.
Preservative:	Sodium azide
Precaution of Use:	This product contains Sodium azide: a POISONOUS AND HAZARDOUS SUBSTANCE which should be handled by trained staff only.
Handling Advice:	Avoid repeated freeze-thaw cycles.
Storage:	-20 °C
Storage Comment:	For short term use, store at 2-8°C up to 1 week. For long term storage, store at -20°C in small aliquots to prevent freeze-thaw cycles.

Validation report #100008 for Western Blotting (WB)



SLC2A4

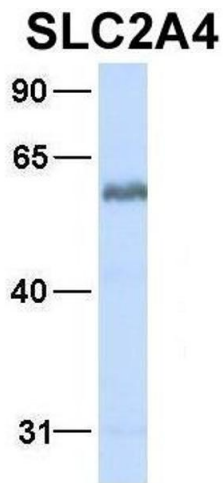


Western Blotting

Image 1. WB Suggested Anti-SLC2A4 Antibody Titration: 0.2-1 ug/ml ELISA Titer: 1:312500 Positive Control: HepG2 cell lysate

Western Blotting

Image 2. Host: Rabbit Target Name: SLC2A4 Sample Tissue: Human MCF7 Antibody Dilution: 1.0ug/ml



Western Blotting

Image 3. Host: Rabbit Target Name: SLC2A4 Sample Type:
Human Fetal Heart Antibody Dilution: 1.0ug/ml

Please check the [product details page](#) for more images. Overall 5 images are available for ABIN2781558.