

Datasheet for ABIN2781559
anti-SLC25A29 antibody (C-Term)[Go to Product page](#)

1 Image

Overview

Quantity:	100 µL
Target:	SLC25A29
Binding Specificity:	C-Term
Reactivity:	Human, Mouse, Rat, Dog, Cow, Rabbit, Guinea Pig, Horse, Zebrafish (Danio rerio)
Host:	Rabbit
Clonality:	Polyclonal
Conjugate:	This SLC25A29 antibody is un-conjugated
Application:	Western Blotting (WB)

Product Details

Immunogen:	The immunogen is a synthetic peptide directed towards the C terminal region of human SLC25A29
Sequence:	AEGWRVFTRG LASTLLRAFP VNAATFATVT VVLTYARGEE AGPEGEAVPA
Predicted Reactivity:	Cow: 100%, Dog: 100%, Guinea Pig: 100%, Horse: 100%, Human: 100%, Mouse: 100%, Rabbit: 100%, Rat: 100%, Zebrafish: 93%
Characteristics:	This is a rabbit polyclonal antibody against SLC25A29. It was validated on Western Blot using a cell lysate as a positive control.
Purification:	Protein A purified

Target Details

Target:	SLC25A29
---------	----------

Target Details

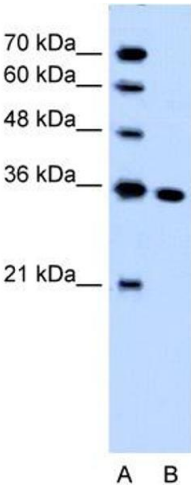
Alternative Name:	SLC25A29 (SLC25A29 Products)
Background:	<p>SLC25A29 belongs to the mitochondrial carrier family and it may has palmitoylcarnitine transporting activity.</p> <p>Alias Symbols: C14orf69, FLJ38975, CACL</p> <p>Protein Size: 303</p>
Molecular Weight:	33 kDa
Gene ID:	123096
NCBI Accession:	NM_001039355 , NP_001034444
UniProt:	Q8N8R3

Application Details

Application Notes:	Optimal working dilutions should be determined experimentally by the investigator.
Comment:	Antigen size: 303 AA
Restrictions:	For Research Use only

Handling

Format:	Liquid
Concentration:	Lot specific
Buffer:	Liquid. Purified antibody supplied in 1x PBS buffer with 0.09 % (w/v) sodium azide and 2 % sucrose.
Preservative:	Sodium azide
Precaution of Use:	This product contains Sodium azide: a POISONOUS AND HAZARDOUS SUBSTANCE which should be handled by trained staff only.
Handling Advice:	Avoid repeated freeze-thaw cycles.
Storage:	-20 °C
Storage Comment:	For short term use, store at 2-8°C up to 1 week. For long term storage, store at -20°C in small aliquots to prevent freeze-thaw cycles.



Western Blotting

Image 1. WB Suggested Anti-SLC25A29 Antibody Titration:
1.25ug/ml Positive Control: Jurkat cell lysate