



[Go to Product page](#)

Datasheet for ABIN2781566

anti-SLC38A1 antibody (Middle Region)

2 Images

Overview

Quantity:	100 µL
Target:	SLC38A1
Binding Specificity:	Middle Region
Reactivity:	Rat, Human, Mouse, Horse, Cow, Dog, Guinea Pig, Rabbit
Host:	Rabbit
Clonality:	Polyclonal
Conjugate:	This SLC38A1 antibody is un-conjugated
Application:	Western Blotting (WB), Immunohistochemistry (IHC)

Product Details

Immunogen:	The immunogen is a synthetic peptide directed towards the middle region of human SLC38A1
Sequence:	DRSQKKMQMV SNISFFAMFV MYFLTAIFGY LTFYDENVQSD LLHKYQSKDD
Predicted Reactivity:	Cow: 86%, Dog: 93%, Guinea Pig: 93%, Horse: 93%, Human: 100%, Mouse: 85%, Rabbit: 93%, Rat: 93%
Characteristics:	This is a rabbit polyclonal antibody against SLC38A1. It was validated on Western Blot and immunohistochemistry.
Purification:	Protein A purified

Target Details

Target:	SLC38A1
---------	---------

Target Details

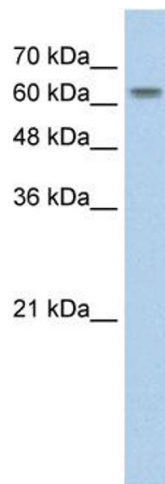
Alternative Name:	SLC38A1 (SLC38A1 Products)
Background:	<p>Amino acid transporters play essential roles in the uptake of nutrients, production of energy, chemical metabolism, detoxification, and neurotransmitter cycling. SLC38A1 is an important transporter of glutamine, an intermediate in the detoxification of ammonia and the production of urea. Glutamine serves as a precursor for the synaptic transmitter, glutamate.</p> <p>Alias Symbols: ATA1, NAT2, SAT1, SNAT1</p> <p>Protein Interaction Partner: FATE1, UBC,</p> <p>Protein Size: 487</p>
Molecular Weight:	54 kDa
Gene ID:	81539
NCBI Accession:	NM_001077484 , NP_001070952
UniProt:	Q9H2H9

Application Details

Application Notes:	Optimal working dilutions should be determined experimentally by the investigator.
Comment:	Antigen size: 487 AA
Restrictions:	For Research Use only

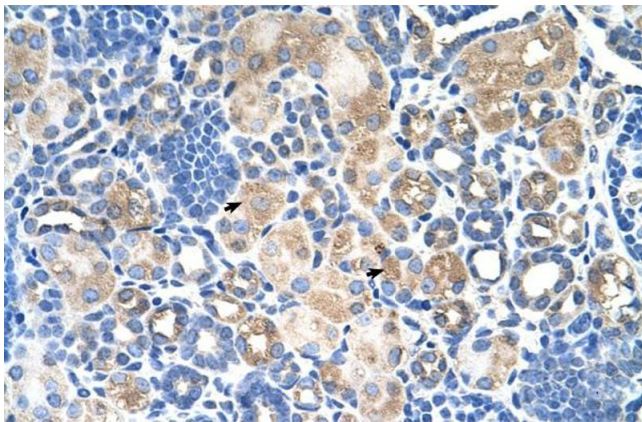
Handling

Format:	Liquid
Concentration:	Lot specific
Buffer:	Liquid. Purified antibody supplied in 1x PBS buffer with 0.09 % (w/v) sodium azide and 2 % sucrose.
Preservative:	Sodium azide
Precaution of Use:	This product contains Sodium azide: a POISONOUS AND HAZARDOUS SUBSTANCE which should be handled by trained staff only.
Handling Advice:	Avoid repeated freeze-thaw cycles.
Storage:	-20 °C
Storage Comment:	For short term use, store at 2-8°C up to 1 week. For long term storage, store at -20°C in small aliquots to prevent freeze-thaw cycles.



Western Blotting

Image 1. WB Suggested Anti-SLC38A1 Antibody Titration: 2.5ug/ml Positive Control: HepG2 cell lysate SLC38A1 is supported by BioGPS gene expression data to be expressed in HepG2



Immunohistochemistry

Image 2. Human kidney