

Datasheet for ABIN2781569  
**anti-SLC37A4 antibody (N-Term)**[Go to Product page](#)

## 2 Images

## Overview

Quantity:	100 µL
Target:	SLC37A4
Binding Specificity:	N-Term
Reactivity:	Human, Mouse, Rat, Cow, Dog, Pig, Rabbit, Horse, Guinea Pig
Host:	Rabbit
Clonality:	Polyclonal
Conjugate:	This SLC37A4 antibody is un-conjugated
Application:	Western Blotting (WB), Immunohistochemistry (IHC)

## Product Details

Immunogen:	The immunogen is a synthetic peptide directed towards the N terminal region of human SLC37A4
Sequence:	LVEEIPLDKD DLGFISSQS AAYAIKFVS GVLSDQMSAR WLFSSGLLLLV
Predicted Reactivity:	Cow: 100%, Dog: 100%, Guinea Pig: 86%, Horse: 93%, Human: 100%, Mouse: 86%, Pig: 93%, Rabbit: 93%, Rat: 93%
Characteristics:	This is a rabbit polyclonal antibody against SLC37A4. It was validated on Western Blot using a cell lysate as a positive control.
Purification:	Affinity Purified

## Target Details

Target:	SLC37A4
---------	---------

## Target Details

Alternative Name:	SLC37A4 ( <a href="#">SLC37A4 Products</a> )
Background:	<p>SLC37A4 transports glucose-6-phosphate from the cytoplasm to the lumen of the endoplasmic reticulum. It forms with glucose-6-phosphatase the complex responsible for glucose production through glycogenolysis and gluconeogenesis. Hence, it plays a central role in homeostatic regulation of blood glucose levels.</p> <p>Alias Symbols: G6PT1, G6PT2, G6PT3, GSD1b, GSD1c, GSD1d, MGC15729, PR00685, TRG19, TRG-19</p> <p>Protein Interaction Partner: SHBG, UBC,</p> <p>Protein Size: 429</p>
Molecular Weight:	46 kDa
Gene ID:	2542
NCBI Accession:	<a href="#">NM_001467</a> , <a href="#">NP_001458</a>
UniProt:	<a href="#">O43826</a>
Pathways:	<a href="#">Carbohydrate Homeostasis</a> , <a href="#">Cellular Glucan Metabolic Process</a>

## Application Details

Application Notes:	Optimal working dilutions should be determined experimentally by the investigator.
Comment:	Antigen size: 429 AA
Restrictions:	For Research Use only

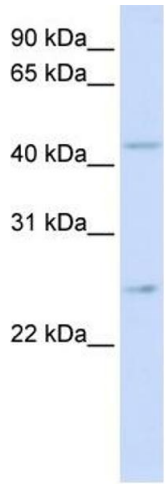
## Handling

Format:	Liquid
Concentration:	Lot specific
Buffer:	Liquid. Purified antibody supplied in 1x PBS buffer with 0.09 % (w/v) sodium azide and 2 % sucrose.
Preservative:	Sodium azide
Precaution of Use:	This product contains Sodium azide: a POISONOUS AND HAZARDOUS SUBSTANCE which should be handled by trained staff only.
Handling Advice:	Avoid repeated freeze-thaw cycles.
Storage:	-20 °C

## Handling

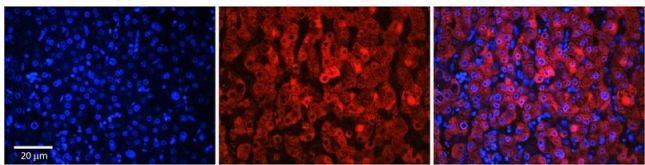
Storage Comment: For short term use, store at 2-8°C up to 1 week. For long term storage, store at -20°C in small aliquots to prevent freeze-thaw cycles.

## Images



### Western Blotting

**Image 1.** WB Suggested Anti-SLC37A4 Antibody Titration: 0.2-1 ug/ml ELISA Titer: 1:312500 Positive Control: Human brain



### Immunohistochemistry

**Image 2.** Rabbit Anti-SLC37A4 Antibody Formalin Fixed Paraffin Embedded Tissue: Human Adult Liver Observed Staining: Cytoplasm in hepatocytes, moderate tissue distribution Primary Antibody Concentration: 1:100 Secondary Antibody: Donkey anti-Rabbit-Cy3 Secondary Antibody Concentration: 1:200 Magnification: 20X Exposure Time: 0.5 – 2.0 sec Protocol located in Reviews and Data.