

Datasheet for ABIN2781570  
**anti-SLC37A4 antibody (Middle Region)**[Go to Product page](#)

## 4 Images

## Overview

|                      |   |
|----------------------|---|
| Quantity:            | 100 µL  |
| Target:              | SLC37A4   |
| Binding Specificity: | Middle Region                                     |
| Reactivity:          | Human, Mouse, Rat, Cow, Dog, Pig, Rabbit, Horse   |
| Host:                | Rabbit  |
| Clonality:           | Polyclonal  |
| Conjugate:           | This SLC37A4 antibody is un-conjugated            |
| Application:         | Western Blotting (WB), Immunohistochemistry (IHC) |

## Product Details

|                       |   |
|-----------------------|---|
| Immunogen:            | The immunogen is a synthetic peptide directed towards the middle region of human SLC37A4  |
| Sequence:             | VSFLCLLLIH NEPADVGLRN LDPMPSEGKK GSLKEESTLQ ELLSPYLWW   |
| Predicted Reactivity: | Cow: 86%, Dog: 86%, Horse: 93%, Human: 100%, Mouse: 100%, Pig: 86%, Rabbit: 86%, Rat: 93%   |
| Characteristics:      | This is a rabbit polyclonal antibody against SLC37A4. It was validated on Western Blot using a cell lysate as a positive control. |
| Purification:         | Affinity Purified   |

## Target Details

|                   |  |
|-------------------|--|
| Target:           | SLC37A4                                      |
| Alternative Name: | SLC37A4 ( <a href="#">SLC37A4 Products</a> ) |

## Target Details

|                   |   |
|-------------------|---|
| Background:       | <p>SLC37A4 transports glucose-6-phosphate from the cytoplasm to the lumen of the endoplasmic reticulum. It forms with glucose-6-phosphatase the complex responsible for glucose production through glycogenolysis and gluconeogenesis. Hence, it plays a central role in homeostatic regulation of blood glucose levels.</p> <p>Alias Symbols: G6PT1, G6PT2, G6PT3, GSD1b, GSD1c, GSD1d, MGC15729, PR00685, TRG19, TRG-19</p> <p>Protein Interaction Partner: SHBG, UBC,</p> <p>Protein Size: 429</p> |
| Molecular Weight: | 46 kDa  |
| Gene ID:          | 2542  |
| NCBI Accession:   | <a href="#">NM_001467</a> , <a href="#">NP_001458</a>   |
| UniProt:          | <a href="#">O43826</a>  |
| Pathways:         | <a href="#">Carbohydrate Homeostasis</a> , <a href="#">Cellular Glucan Metabolic Process</a>  |

## Application Details

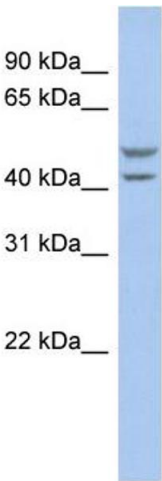
|                    |  |
|--------------------|--|
| Application Notes: | Optimal working dilutions should be determined experimentally by the investigator. |
| Comment:           | Antigen size: 429 AA   |
| Restrictions:      | For Research Use only  |

## Handling

|                    |  |
|--------------------|--|
| Format:            | Liquid   |
| Concentration:     | Lot specific   |
| Buffer:            | Liquid. Purified antibody supplied in 1x PBS buffer with 0.09 % (w/v) sodium azide and 2 % sucrose.                    |
| Preservative:      | Sodium azide   |
| Precaution of Use: | This product contains Sodium azide: a POISONOUS AND HAZARDOUS SUBSTANCE which should be handled by trained staff only. |
| Handling Advice:   | Avoid repeated freeze-thaw cycles.   |
| Storage:           | -20 °C   |
| Storage Comment:   | For short term use, store at 2-8°C up to 1 week. For long term storage, store at -20°C in small                        |

aliquots to prevent freeze-thaw cycles.

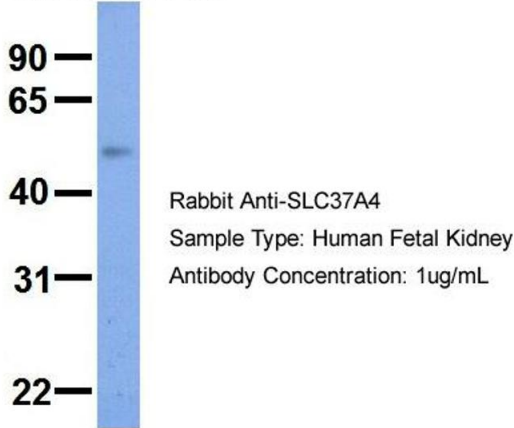
Images



Western Blotting

**Image 1.** WB Suggested Anti-SLC37A4 Antibody Titration: 0.2-1 ug/ml ELISA Titer: 1:62500 Positive Control: OVCAR-3 cell lysate SLC37A4 is supported by BioGPS gene expression data to be expressed in OVCAR3

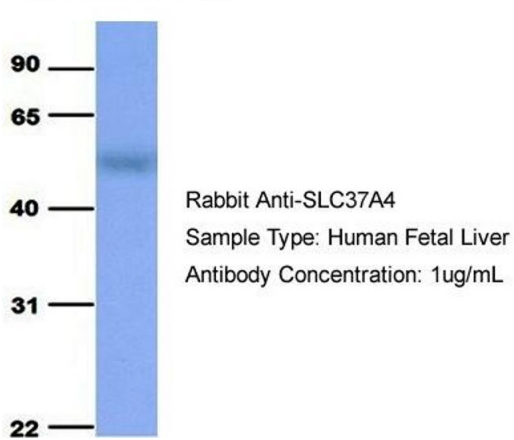
SLC37A4



Western Blotting

**Image 2.** Host: Rabbit Target Name: SLC37A4 Sample Type: Human Fetal Kidney Antibody Dilution: 1.0ug/ml

SLC37A4



Western Blotting

**Image 3.** Host: Rabbit Target Name: SLC37A4 Sample Type: Human Fetal Liver Antibody Dilution: 1.0ug/ml

Please check the [product details page](#) for more images. Overall 4 images are available for ABIN2781570.