

Datasheet for ABIN2781574

anti-ORCTL-2/SLC22A18 antibody (N-Term)[Go to Product page](#)**2** Images

Overview

Quantity:	100 µL
Target:	ORCTL-2/SLC22A18 (SLC22A18)
Binding Specificity:	N-Term
Reactivity:	Human, Mouse, Rat, Cow, Guinea Pig, Horse
Host:	Rabbit
Clonality:	Polyclonal
Conjugate:	This ORCTL-2/SLC22A18 antibody is un-conjugated
Application:	Western Blotting (WB)

Product Details

Immunogen:	The immunogen is a synthetic peptide directed towards the N terminal region of human SLC22A18
Sequence:	AASSPALPGV YLLFASRLPG ALMHTLPAAQ MVITDLSAPE ERPAALGRLG
Predicted Reactivity:	Cow: 86%, Guinea Pig: 93%, Horse: 93%, Human: 100%, Mouse: 86%, Rat: 79%
Characteristics:	This is a rabbit polyclonal antibody against SLC22A18. It was validated on Western Blot using a cell lysate as a positive control.
Purification:	Affinity Purified

Target Details

Target:	ORCTL-2/SLC22A18 (SLC22A18)
---------	-----------------------------

Target Details

Alternative Name: SLC22A18 ([SLC22A18 Products](#))

Background: This gene is one of several tumor-suppressing subtransferable fragments located in the imprinted gene domain of 11p15.5, an important tumor-suppressor gene region. Alterations in this region have been associated with the Beckwith-Wiedemann syndrome, Wilms tumor, rhabdomyosarcoma, adrenocortical carcinoma, and lung, ovarian, and breast cancer. This gene may play a role in malignancies and disease that involve this region as well as the transport of chloroquine- and quinidine-related compounds in the kidney. This gene is one of several tumor-suppressing subtransferable fragments located in the imprinted gene domain of 11p15.5, an important tumor-suppressor gene region. Alterations in this region have been associated with the Beckwith-Wiedemann syndrome, Wilms tumor, rhabdomyosarcoma, adrenocortical carcinoma, and lung, ovarian, and breast cancer. This gene may play a role in malignancies and disease that involve this region as well as the transport of chloroquine- and quinidine-related compounds in the kidney. Two alternative transcripts encoding the same isoform have been described.

Alias Symbols: BWR1A, BWSCR1A, DKFZp667A184, HET, IMPT1, ITM, ORCTL2, SLC22A1L, TSSC5, p45-BWR1A

Protein Interaction Partner: RNF167, UBC,

Protein Size: 424

Molecular Weight: 45 kDa

Gene ID: 5002

NCBI Accession: [NM_002555](#), [NP_002546](#)

UniProt: [Q96B11](#)

Application Details

Application Notes: Optimal working dilutions should be determined experimentally by the investigator.

Comment: Antigen size: 424 AA

Restrictions: For Research Use only

Handling

Format: Liquid

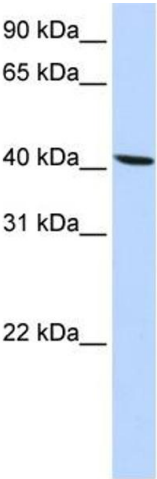
Concentration: Lot specific

Buffer: Liquid. Purified antibody supplied in 1x PBS buffer with 0.09 % (w/v) sodium azide and 2 %

Handling

	sucrose.
Preservative:	Sodium azide
Precaution of Use:	This product contains Sodium azide: a POISONOUS AND HAZARDOUS SUBSTANCE which should be handled by trained staff only.
Handling Advice:	Avoid repeated freeze-thaw cycles.
Storage:	-20 °C
Storage Comment:	For short term use, store at 2-8°C up to 1 week. For long term storage, store at -20°C in small aliquots to prevent freeze-thaw cycles.

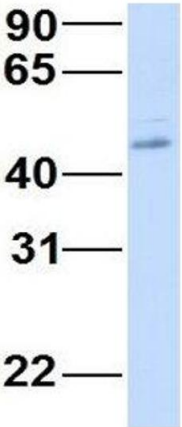
Images



Western Blotting

Image 1. WB Suggested Anti-SLC22A18 Antibody Titration: 0.2-1 ug/ml ELISA Titer: 1:312500 Positive Control: HepG2 cell lysate SLC22A18 is supported by BioGPS gene expression data to be expressed in HepG2

SLC22A18



Rabbit Anti-SLC22A18
Sample Type: Human Fetal Lung
Antibody Concentration: 1ug/mL

Western Blotting

Image 2. Host: Rabbit Target Name: SLC22A18 Sample Type: Human Fetal Lung Antibody Dilution: 1.0ug/ml