

Datasheet for ABIN2781578
anti-SLC4A2 antibody (N-Term)[Go to Product page](#)

2 Images

Overview

Quantity:	100 µL
Target:	SLC4A2
Binding Specificity:	N-Term
Reactivity:	Human, Mouse, Rat, Pig, Rabbit, Dog, Horse, Cow, Guinea Pig, Saccharomyces cerevisiae
Host:	Rabbit
Clonality:	Polyclonal
Conjugate:	This SLC4A2 antibody is un-conjugated
Application:	Western Blotting (WB)

Product Details

Immunogen:	The immunogen is a synthetic peptide directed towards the N terminal region of human SLC4A2
Sequence:	MSSAPRRPAK GADSFCTPEP ESLGPGTPGF PEQEEDELHR TLGVERFEEI
Predicted Reactivity:	Cow: 86%, Dog: 92%, Guinea Pig: 93%, Horse: 93%, Human: 100%, Mouse: 100%, Pig: 100%, Rabbit: 100%, Rat: 92%, Yeast: 100%
Characteristics:	This is a rabbit polyclonal antibody against SLC4A2. It was validated on Western Blot using a cell lysate as a positive control.
Purification:	Affinity Purified

Target Details

Target:	SLC4A2
---------	--------

Target Details

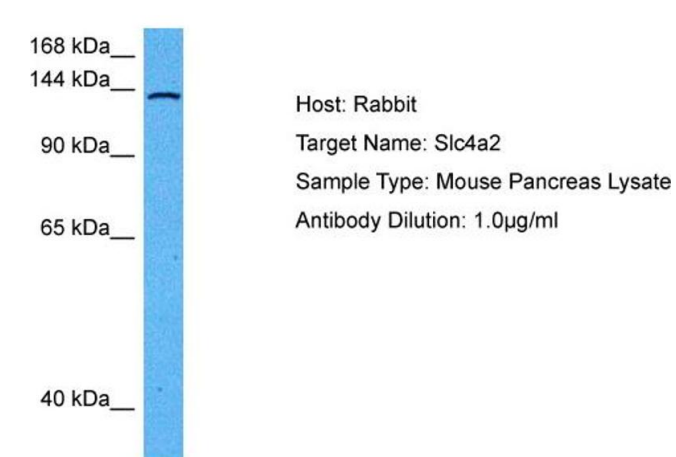
Alternative Name:	SLC4A2 (SLC4A2 Products)
Background:	SLC4A2 is a plasma membrane anion exchange protein of wide distribution. Alias Symbols: AE2, BND3L, EPB3L1, HKB3, NBND3 Protein Interaction Partner: UBC, ATXN1, CA2, EPB42, Protein Size: 1241
Molecular Weight:	137 kDa
Gene ID:	6522
NCBI Accession:	NM_003040 , NP_003031
UniProt:	P04920

Application Details

Application Notes:	Optimal working dilutions should be determined experimentally by the investigator.
Comment:	Antigen size: 1241 AA
Restrictions:	For Research Use only

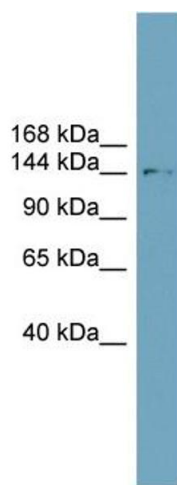
Handling

Format:	Liquid
Concentration:	Lot specific
Buffer:	Liquid. Purified antibody supplied in 1x PBS buffer with 0.09 % (w/v) sodium azide and 2 % sucrose.
Preservative:	Sodium azide
Precaution of Use:	This product contains Sodium azide: a POISONOUS AND HAZARDOUS SUBSTANCE which should be handled by trained staff only.
Handling Advice:	Avoid repeated freeze-thaw cycles.
Storage:	-20 °C
Storage Comment:	For short term use, store at 2-8°C up to 1 week. For long term storage, store at -20°C in small aliquots to prevent freeze-thaw cycles.



Western Blotting

Image 1. Host: Mouse Target Name: SLC4A2 Sample Tissue: Mouse Pancreas Antibody Dilution: 1 ug/ml



Western Blotting

Image 2. WB Suggested Anti-SLC4A2 Antibody Titration: 0.2-1 ug/ml ELISA Titer: 1:62500 Positive Control: ACHN cell lysate SLC4A2 is supported by BioGPS gene expression data to be expressed in ACHN