



[Go to Product page](#)

Datasheet for ABIN2781579
anti-SLC5A2 antibody (Middle Region)

1 Image

Overview

Quantity:	100 µL
Target:	SLC5A2
Binding Specificity:	Middle Region
Reactivity:	Human, Rat, Mouse, Horse, Guinea Pig, Rabbit, Cow, Dog
Host:	Rabbit
Clonality:	Polyclonal
Conjugate:	This SLC5A2 antibody is un-conjugated
Application:	Western Blotting (WB)

Product Details

Sequence:	SSTCYQPRPD SYHLLRDPVT GDLWPALLL GLTIVSGWYW CSDQVIVQRC
Predicted Reactivity:	Cow: 93%, Dog: 93%, Guinea Pig: 93%, Horse: 93%, Human: 100%, Mouse: 93%, Rabbit: 93%, Rat: 93%
Characteristics:	This is a rabbit polyclonal antibody against Slc5a2. It was validated on Western Blot.
Purification:	Affinity Purified

Target Details

Target:	SLC5A2
Alternative Name:	Slc5a2 (SLC5A2 Products)
Background:	Efficient substrate transport in mammalian kidney is provided by the concerted action of a low

Target Details

affinity high capacity and a high affinity low capacity Na⁺/glucose cotransporter arranged in series along kidney proximal tubules.

Alias Symbols: Sglt2

Protein Size: 670

Molecular Weight: 73 kDa

Gene ID: 246787

NCBI Accession: [NM_133254](#), [NP_573517](#)

UniProt: [Q92317](#)

Application Details

Application Notes: Optimal working dilutions should be determined experimentally by the investigator.

Comment: Antigen size: 670 AA

Restrictions: For Research Use only

Handling

Format: Liquid

Concentration: Lot specific

Buffer: Liquid. Purified antibody supplied in 1x PBS buffer with 0.09 % (w/v) sodium azide and 2 % sucrose.

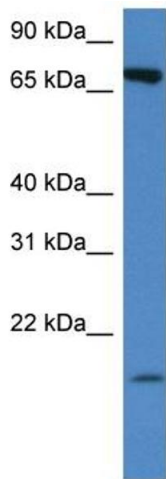
Preservative: Sodium azide

Precaution of Use: This product contains Sodium azide: a POISONOUS AND HAZARDOUS SUBSTANCE which should be handled by trained staff only.

Handling Advice: Avoid repeated freeze-thaw cycles.

Storage: -20 °C

Storage Comment: For short term use, store at 2-8°C up to 1 week. For long term storage, store at -20°C in small aliquots to prevent freeze-thaw cycles.



Rabbit Anti-Slc5a2 Antibody
Catalog Number: ARP43832
Lot Number: QC17324
Lane: Mouse Thymus Lysate

Antibody Titration: 1.0µg/ml
Gel Concentration: 12%

Western Blotting

Image 1.