

Datasheet for ABIN2781581
anti-SLC6A1 antibody (Middle Region)

3 Images

[Go to Product page](#)

Overview

Quantity:	100 µL
Target:	SLC6A1 (GAT1)
Binding Specificity:	Middle Region
Reactivity:	Human, Rat, Mouse, Cow, Dog, Guinea Pig, Horse, Rabbit, Zebrafish (Danio rerio)
Host:	Rabbit
Clonality:	Polyclonal
Conjugate:	This SLC6A1 antibody is un-conjugated
Application:	Western Blotting (WB), Immunohistochemistry (IHC)

Product Details

Immunogen:	The immunogen is a synthetic peptide directed towards the middle region of human SLC6A1
Sequence:	CCINSCTSMF AGFVIFSIVG FMAHVTKRSI ADVAASGPGL AFLAYPEAVT
Predicted Reactivity:	Cow: 100%, Dog: 100%, Guinea Pig: 100%, Horse: 100%, Human: 100%, Mouse: 100%, Rabbit: 86%, Rat: 100%, Zebrafish: 93%
Characteristics:	This is a rabbit polyclonal antibody against SLC6A1. It was validated on Western Blot using a cell lysate as a positive control.
Purification:	Affinity Purified

Target Details

Target:	SLC6A1 (GAT1)
---------	---------------

Target Details

Alternative Name:	SLC6A1 (GAT1 Products)
Background:	<p>SLC6A1 terminates the action of GABA by its high affinity sodium-dependent reuptake into presynaptic terminals. This protein is the target of psychomotor stimulants such as amphetamines or cocaine.</p> <p>Alias Symbols: GABATHG, GABATR, GAT1</p> <p>Protein Interaction Partner: Htt, STX1A,</p> <p>Protein Size: 599</p>
Molecular Weight:	67 kDa
Gene ID:	6529
NCBI Accession:	NM_003042 , NP_003033
UniProt:	P30531

Application Details

Application Notes:	Optimal working dilutions should be determined experimentally by the investigator.
Comment:	Antigen size: 599 AA
Restrictions:	For Research Use only

Handling

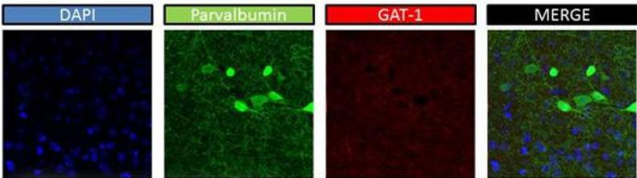
Format:	Liquid
Concentration:	Lot specific
Buffer:	Liquid. Purified antibody supplied in 1x PBS buffer with 0.09 % (w/v) sodium azide and 2 % sucrose.
Preservative:	Sodium azide
Precaution of Use:	This product contains Sodium azide: a POISONOUS AND HAZARDOUS SUBSTANCE which should be handled by trained staff only.
Handling Advice:	Avoid repeated freeze-thaw cycles.
Storage:	-20 °C
Storage Comment:	For short term use, store at 2-8°C up to 1 week. For long term storage, store at -20°C in small aliquots to prevent freeze-thaw cycles.



Western Blotting

Image 1. WB Suggested Anti-SLC6A1 Antibody Titration: 0.2-1 ug/ml ELISA Titer: 1:62500 Positive Control: Human Liver

Aviva SLC6A1stains SSC in P42 mouse



ARP43834_P050 (SLC6A1)
Dilution: 1:1000
Application data in forum

Image 2.

Immunohistochemistry

Image 3. mouse brain

