



Datasheet for ABIN2781583
anti-SLC7A1 antibody (N-Term)



[Go to Product page](#)

3 Images

1 Publication

Overview

Quantity:	100 µL
Target:	SLC7A1
Binding Specificity:	N-Term
Reactivity:	Human, Cow, Horse, Rabbit, Pig
Host:	Rabbit
Clonality:	Polyclonal
Conjugate:	This SLC7A1 antibody is un-conjugated
Application:	Western Blotting (WB)

Product Details

Immunogen:	The immunogen is a synthetic peptide directed towards the N terminal region of human SLC7A1
Sequence:	LGFIMVSGFV KGSVKNWQLT EEDFGNTSGR LCLNNDTKEG KPGVGGFMPF
Predicted Reactivity:	Cow: 100%, Horse: 93%, Human: 100%, Pig: 86%, Rabbit: 100%
Characteristics:	This is a rabbit polyclonal antibody against SLC7A1. It was validated on Western Blot using a cell lysate as a positive control.
Purification:	Affinity Purified

Target Details

Target:	SLC7A1
---------	--------

Target Details

Alternative Name:	SLC7A1 (SLC7A1 Products)
Background:	<p>SLC7A1 is a high-affinity, low capacity permease involved in the transport of the cationic amino acids (arginine, lysine and ornithine) in non-hepatic tissues. It may also function as an ecotropic retroviral leukemia receptor.</p> <p>Alias Symbols: ATRC1, CAT-1, ERR, HCAT1, REC1L</p> <p>Protein Interaction Partner: FATE1, UBC, BAG3, APP, ELAVL1,</p> <p>Protein Size: 629</p>
Molecular Weight:	68 kDa
Gene ID:	6541
NCBI Accession:	NM_003045 , NP_003036
UniProt:	P30825
Pathways:	Dicarboxylic Acid Transport

Application Details

Application Notes:	Optimal working dilutions should be determined experimentally by the investigator.
Comment:	Antigen size: 629 AA
Restrictions:	For Research Use only

Handling

Format:	Liquid
Concentration:	Lot specific
Buffer:	Liquid. Purified antibody supplied in 1x PBS buffer with 0.09 % (w/v) sodium azide and 2 % sucrose.
Preservative:	Sodium azide
Precaution of Use:	This product contains Sodium azide: a POISONOUS AND HAZARDOUS SUBSTANCE which should be handled by trained staff only.
Handling Advice:	Avoid repeated freeze-thaw cycles.
Storage:	-20 °C
Storage Comment:	For short term use, store at 2-8°C up to 1 week. For long term storage, store at -20°C in small aliquots to prevent freeze-thaw cycles.

Publications

Product cited in:

Halwachs, Lakoma, Schäfer, Seibel, Honscha: "The antiepileptic drugs phenobarbital and carbamazepine reduce transport of methotrexate in rat choroid plexus by down-regulation of the reduced folate carrier." in: **Molecular pharmacology**, Vol. 80, Issue 4, pp. 621-9, (2011) ([PubMed](#)).

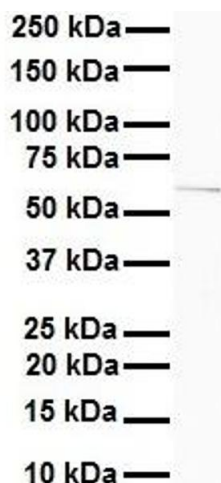
Marchi, Paoluzzi, Scotto, Seshan, Zain, Zinzani, OConnor: "Pralatrexate is synergistic with the proteasome inhibitor bortezomib in in vitro and in vivo models of T-cell lymphoid malignancies." in: **Clinical cancer research : an official journal of the American Association for Cancer Research**, Vol. 16, Issue 14, pp. 3648-58, (2010) ([PubMed](#)).

Images



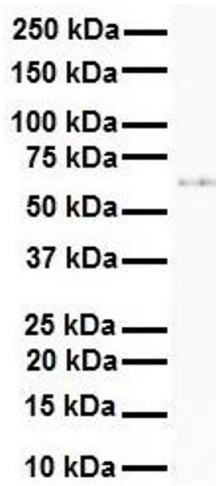
Western Blotting

Image 1. WB Suggested Anti-SLC7A1 Antibody Titration: 0.2-1 ug/ml Positive Control: Jurkat cell lysate SLC7A1 is strongly supported by BioGPS gene expression data to be expressed in Human Jurkat cells



Western Blotting

Image 2. WB Suggested Anti-SLC7A1 antibody Titration: 1 ug/mL Sample Type: Human MDA-MB-435s



Western Blotting

Image 3. WB Suggested Anti-SLC7A1 antibody Titration: 1 ug/mL Sample Type: Human 721_B