

Datasheet for ABIN2781587

anti-Solute Carrier Family 34 (Type II Sodium/phosphate Cotransporter), Member 1 (SLC34A1) (N-Term) antibody[Go to Product page](#)

1 Image

Overview

Quantity:	100 µL
Target:	Solute Carrier Family 34 (Type II Sodium/phosphate Cotransporter), Member 1 (SLC34A1)
Binding Specificity:	N-Term
Reactivity:	Human, Mouse, Rat, Horse, Pig, Rabbit, Cow, Sheep, Dog, Guinea Pig
Host:	Rabbit
Clonality:	Polyclonal
Conjugate:	Un-conjugated
Application:	Western Blotting (WB)

Product Details

Immunogen:	The immunogen is a synthetic peptide directed towards the N-terminal region of rat SLC34A1
Sequence:	YVPSPQVLHR IPGTTTYAIS SLSPVALTEH SCPYGEVLEC HDPLPAKLAQ
Predicted Reactivity:	Cow: 100%, Dog: 100%, Guinea Pig: 93%, Horse: 92%, Human: 100%, Mouse: 100%, Pig: 100%, Rabbit: 93%, Rat: 100%, Sheep: 100%
Characteristics:	This is a rabbit polyclonal antibody against Slc34a1. It was validated on Western Blot.
Purification:	Affinity Purified

Target Details

Target:	Solute Carrier Family 34 (Type II Sodium/phosphate Cotransporter), Member 1 (SLC34A1)
Alternative Name:	Slc34a1 (SLC34A1 Products)

Target Details

Background: This gene encodes a member of the type II sodium-phosphate cotransporter family. Mutations in this gene are associated with hypophosphatemia nephrolithiasis/osteoporosis 1. Alternative splicing results in multiple transcript variants.

Alias Symbols: NPT2, FRTS2, SLC11, NAPI-3, NPTIIa, NPHLOP1, SLC17A2

Protein Size: 337

Molecular Weight: 37 kDa

Gene ID: 6569

NCBI Accession: [NM_001167579](#), [NP_001161051](#)

UniProt: [Q06495](#)

Application Details

Application Notes: Optimal working dilution should be determined by the investigator.

Restrictions: For Research Use only

Handling

Format: Liquid

Concentration: 1 mg/mL

Buffer: Liquid. Purified antibody supplied in 1x PBS buffer with 0.09 % (w/v) sodium azide and 2 % sucrose.

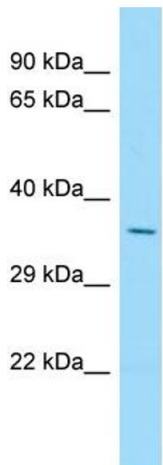
Preservative: Sodium azide

Precaution of Use: This product contains Sodium azide: a POISONOUS AND HAZARDOUS SUBSTANCE which should be handled by trained staff only.

Handling Advice: Avoid repeat freeze-thaw cycles.

Storage: -20 °C

Storage Comment: For short term use, store at 2-8°C up to 1 week. For long term storage, store at -20°C in small aliquots to prevent freeze-thaw cycles.



Host: Rabbit
Target Name: Slc34a1
Sample Tissue: Rat Thymus Lysate
Antibody Dilution: 1.0µg/ml

Western Blotting

Image 1. Host: Rabbit Target Name: Slc34a1 Sample Type:
Rat Thymus lysates Antibody Dilution: 1.0ug/ml