

Datasheet for ABIN2781588

anti-SLC18A2 antibody (N-Term)**2** Images[Go to Product page](#)

Overview

| | |
|----------------------|---|
| Quantity: | 100 µL |
| Target: | SLC18A2 |
| Binding Specificity: | N-Term |
| Reactivity: | Human, Mouse, Rat, Dog, Pig, Cow, Horse, Rabbit, Guinea Pig |
| Host: | Rabbit |
| Clonality: | Polyclonal |
| Conjugate: | This SLC18A2 antibody is un-conjugated |
| Application: | Western Blotting (WB), Immunohistochemistry (IHC) |

Product Details

| | |
|-----------------------|---|
| Immunogen: | The immunogen is a synthetic peptide directed towards the N terminal region of human SLC18A2 |
| Sequence: | NATRDLTLLHQ TATQHMTNA SAVPSDCPSE DKDLLNENVQ VGLLFASKAT |
| Predicted Reactivity: | Cow: 100%, Dog: 86%, Guinea Pig: 86%, Horse: 100%, Human: 100%, Mouse: 100%, Pig: 93%, Rabbit: 100%, Rat: 100% |
| Characteristics: | This is a rabbit polyclonal antibody against SLC18A2. It was validated on Western Blot using a cell lysate as a positive control. |
| Purification: | Affinity Purified |

Target Details

| | |
|---------|---------|
| Target: | SLC18A2 |
|---------|---------|

Target Details

| | |
|-------------------|---|
| Alternative Name: | SLC18A2 (SLC18A2 Products) |
| Background: | <p>The vesicular monoamine transporter acts to accumulate cytosolic monoamines into synaptic vesicles, using the proton gradient maintained across the synaptic vesicular membrane. Its proper function is essential to the correct activity of the monoaminergic systems that have been implicated in several human neuropsychiatric disorders. The transporter is a site of action of important drugs, including reserpine and tetrabenazine.</p> <p>Alias Symbols: MGC120477, MGC120478, MGC26538, SVAT, SVMT, VAT2, VMAT2</p> <p>Protein Interaction Partner: PARK7, UBC, CSNK1A1, CSNK2A2, CSNK2A1,</p> <p>Protein Size: 514</p> |
| Molecular Weight: | 56 kDa |
| Gene ID: | 6571 |
| NCBI Accession: | NM_003054 , NP_003045 |
| UniProt: | Q05940 |

Application Details

| | |
|--------------------|--|
| Application Notes: | Optimal working dilutions should be determined experimentally by the investigator. |
| Comment: | Antigen size: 514 AA |
| Restrictions: | For Research Use only |

Handling

| | |
|--------------------|--|
| Format: | Liquid |
| Concentration: | Lot specific |
| Buffer: | Liquid. Purified antibody supplied in 1x PBS buffer with 0.09 % (w/v) sodium azide and 2 % sucrose. |
| Preservative: | Sodium azide |
| Precaution of Use: | This product contains Sodium azide: a POISONOUS AND HAZARDOUS SUBSTANCE which should be handled by trained staff only. |
| Handling Advice: | Avoid repeated freeze-thaw cycles. |
| Storage: | -20 °C |
| Storage Comment: | For short term use, store at 2-8°C up to 1 week. For long term storage, store at -20°C in small |

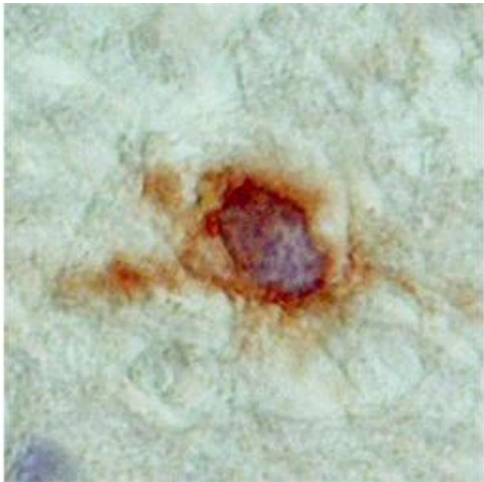
aliquots to prevent freeze-thaw cycles.

Images



Western Blotting

Image 1. WB Suggested Anti-SLC18A2 Antibody Titration:
0.2-1 ug/ml Positive Control: Jurkat cell lysate



Immunohistochemistry

Image 2. mouse and rat brain