

Datasheet for ABIN2781590

anti-Slc30a3 antibody (Middle Region)[Go to Product page](#)**2** Images

Overview

Quantity:	100 µL
Target:	Slc30a3
Binding Specificity:	Middle Region
Reactivity:	Human, Mouse, Rat, Guinea Pig, Cow, Dog, Horse
Host:	Rabbit
Clonality:	Polyclonal
Conjugate:	This Slc30a3 antibody is un-conjugated
Application:	Western Blotting (WB)

Product Details

Immunogen:	The immunogen is a synthetic peptide directed towards the middle region of human SLC30A3
Sequence:	AMLLTASIAV CANLLMAFVL HQAGPPPHSHG SRGAHEYAPLE EGPEEPLPLG
Predicted Reactivity:	Cow: 86%, Dog: 93%, Guinea Pig: 100%, Horse: 93%, Human: 100%, Mouse: 100%, Rat: 100%
Characteristics:	This is a rabbit polyclonal antibody against SLC30A3. It was validated on Western Blot using a cell lysate as a positive control.
Purification:	Affinity Purified

Target Details

Target:	Slc30a3
Alternative Name:	SLC30A3 (Slc30a3 Products)

Target Details

Background: SLC30A3 is involved in accumulation of zinc in synaptic vesicles.
Alias Symbols: ZNT3
Protein Interaction Partner: NAALADL2, AP3D1, AP3B1, AP3S1,
Protein Size: 388

Molecular Weight: 42 kDa

Gene ID: 7781

NCBI Accession: [NM_003459](#), [NP_003450](#)

UniProt: [Q99726](#)

Pathways: [Transition Metal Ion Homeostasis](#)

Application Details

Application Notes: Optimal working dilutions should be determined experimentally by the investigator.

Comment: Antigen size: 388 AA

Restrictions: For Research Use only

Handling

Format: Liquid

Concentration: Lot specific

Buffer: Liquid. Purified antibody supplied in 1x PBS buffer with 0.09 % (w/v) sodium azide and 2 % sucrose.

Preservative: Sodium azide

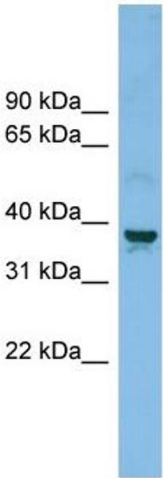
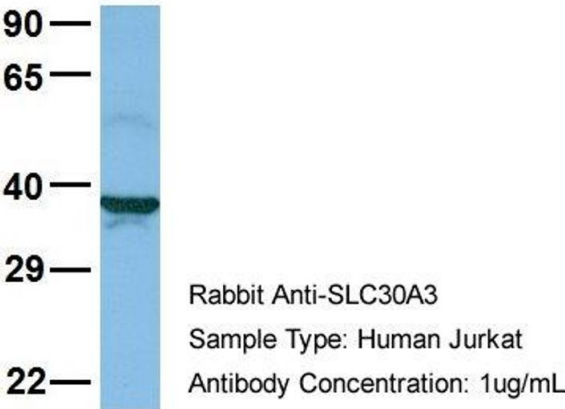
Precaution of Use: This product contains Sodium azide: a POISONOUS AND HAZARDOUS SUBSTANCE which should be handled by trained staff only.

Handling Advice: Avoid repeated freeze-thaw cycles.

Storage: -20 °C

Storage Comment: For short term use, store at 2-8°C up to 1 week. For long term storage, store at -20°C in small aliquots to prevent freeze-thaw cycles.

SLC30A3



Western Blotting

Image 1. Host: Rabbit Target Name: SLC30A3 Sample Type: Jurkat Antibody Dilution: 1.0ug/ml SLC30A3 is supported by BioGPS gene expression data to be expressed in Jurkat

Western Blotting

Image 2. WB Suggested Anti-SLC30A3 Antibody Titration: 0.2-1 ug/ml ELISA Titer: 1:62500 Positive Control: Jurkat cell lysate SLC30A3 is supported by BioGPS gene expression data to be expressed in Jurkat