

Datasheet for ABIN2781592  
**anti-SLC25A11 antibody (C-Term)**

## 2 Images

[Go to Product page](#)

## Overview

Quantity:	100 µL
Target:	SLC25A11
Binding Specificity:	C-Term
Reactivity:	Human, Mouse, Rat, Rabbit, Cow, Sheep, Dog, Zebrafish (Danio rerio), Guinea Pig, Horse
Host:	Rabbit
Clonality:	Polyclonal
Conjugate:	This SLC25A11 antibody is un-conjugated
Application:	Western Blotting (WB), Immunohistochemistry (IHC)

## Product Details

Immunogen:	The immunogen is a synthetic peptide directed towards the C terminal region of human SLC25A11
Sequence:	DGKPEYKNGL DVLFKVVRYE GFFSLWKGFT PYYARLGPHT VLTFFIFLEQM
Predicted Reactivity:	Cow: 100%, Dog: 100%, Guinea Pig: 100%, Horse: 100%, Human: 100%, Mouse: 100%, Rabbit: 100%, Rat: 100%, Sheep: 100%, Zebrafish: 100%
Characteristics:	This is a rabbit polyclonal antibody against SLC25A11. It was validated on Western Blot using a cell lysate as a positive control.
Purification:	Affinity Purified

## Target Details

Target:	SLC25A11
---------	----------

## Target Details

Alternative Name:	SLC25A11 ( <a href="#">SLC25A11 Products</a> )
Background:	<p>SLC25A11 catalyzes the transport of 2-oxoglutarate across the inner mitochondrial membrane in an electroneutral exchange for malate or other dicarboxylic acids, and plays an important role in several metabolic processes, including the malate-aspartate shuttle, the oxoglutarate/isocitrate shuttle, in gluconeogenesis from lactate, and in nitrogen metabolism.</p> <p>Alias Symbols: OGC, SLC20A4</p> <p>Protein Interaction Partner: RAPGEF2, UBC, SUMO2, STAU1, SUZ12, RNF2, BMI1, FBXO6, FBXO46, FBXW4, ADRB2, CLN5, CLN3, MMS19, UBL4A, MDC1, ECT2, FLOT1, HDAC5, MYC, ICT1, CEBPA, CAMKK2, BABAM1, SLC25A11, COPA, CDKN1A,</p> <p>Protein Size: 314</p>
Molecular Weight:	34 kDa
Gene ID:	8402
NCBI Accession:	<a href="#">NM_003562</a> , <a href="#">NP_003553</a>
UniProt:	<a href="#">Q02978</a>
Pathways:	<a href="#">Dicarboxylic Acid Transport</a>

## Application Details

Application Notes:	Optimal working dilutions should be determined experimentally by the investigator.
Comment:	Antigen size: 314 AA
Restrictions:	For Research Use only

## Handling

Format:	Liquid
Concentration:	Lot specific
Buffer:	Liquid. Purified antibody supplied in 1x PBS buffer with 0.09 % (w/v) sodium azide and 2 % sucrose.
Preservative:	Sodium azide
Precaution of Use:	This product contains Sodium azide: a POISONOUS AND HAZARDOUS SUBSTANCE which should be handled by trained staff only.
Handling Advice:	Avoid repeated freeze-thaw cycles.

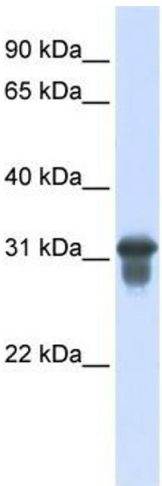
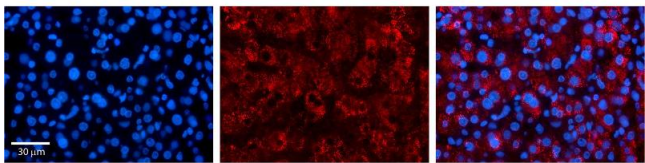
## Handling

Storage:	-20 °C
Storage Comment:	For short term use, store at 2-8°C up to 1 week. For long term storage, store at -20°C in small aliquots to prevent freeze-thaw cycles.

## Images

### Immunohistochemistry

Image 1.



### Western Blotting

**Image 2.** WB Suggested Anti-SLC25A11 Antibody Titration:  
0.2-1 ug/ml ELISA Titer: 1:62500 Positive Control:  
Transfected 293T