

## Datasheet for ABIN2781595 anti-SLC25A12 antibody (Middle Region)



[Go to Product page](#)

### 3 Images

#### Overview

Quantity:	100 µL
Target:	SLC25A12 (Slc25a12)
Binding Specificity:	Middle Region
Reactivity:	Human, Mouse, Rat, Pig, Rabbit, Cow, Dog, Guinea Pig, Horse
Host:	Rabbit
Clonality:	Polyclonal
Conjugate:	This SLC25A12 antibody is un-conjugated
Application:	Western Blotting (WB), Immunohistochemistry (IHC)

#### Product Details

Immunogen:	The immunogen is a synthetic peptide directed towards the middle region of human SLC25A12
Sequence:	GLKPAGSEPT PKSRIADLPP ANPDHIGGYR LATATFAGIE NKFGLYLPKF
Predicted Reactivity:	Cow: 100%, Dog: 100%, Guinea Pig: 93%, Horse: 93%, Human: 100%, Mouse: 100%, Pig: 100%, Rabbit: 100%, Rat: 100%
Characteristics:	This is a rabbit polyclonal antibody against SLC25A12. It was validated on Western Blot using a cell lysate as a positive control.
Purification:	Affinity Purified

#### Target Details

Target:	SLC25A12 (Slc25a12)
---------	---------------------

## Target Details

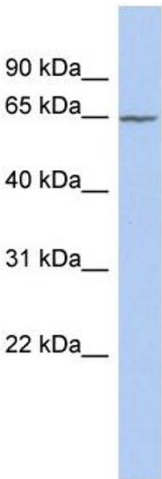
Alternative Name:	SLC25A12 ( <a href="#">Slc25a12 Products</a> )
Background:	<p>SLC25A12 is a calcium-dependent mitochondrial aspartate and glutamate carrier. SLC25A12 may have a function in the urea cycle.</p> <p>Alias Symbols: ARALAR, ARALAR1, AGC1</p> <p>Protein Interaction Partner: PCSK9, SUMO2, SUMO1, UBC, NEDD8, FBXO6, JUND, ATF2, Htt, CHCHD6, GNAS, SMAD3, MYC, ICT1, SRGAP2, C20orf24, PELO, PHLDA3, PNKP,</p> <p>Protein Size: 678</p>
Molecular Weight:	75 kDa
Gene ID:	8604
NCBI Accession:	<a href="#">NM_003705</a> , <a href="#">NP_003696</a>
UniProt:	<a href="#">O75746</a>
Pathways:	<a href="#">Ribonucleoside Biosynthetic Process</a> , <a href="#">Dicarboxylic Acid Transport</a>

## Application Details

Application Notes:	Optimal working dilutions should be determined experimentally by the investigator.
Comment:	Antigen size: 678 AA
Restrictions:	For Research Use only

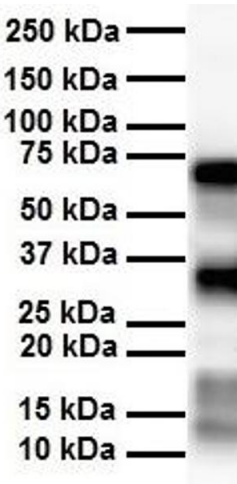
## Handling

Format:	Liquid
Concentration:	Lot specific
Buffer:	Liquid. Purified antibody supplied in 1x PBS buffer with 0.09 % (w/v) sodium azide and 2 % sucrose.
Preservative:	Sodium azide
Precaution of Use:	This product contains Sodium azide: a POISONOUS AND HAZARDOUS SUBSTANCE which should be handled by trained staff only.
Handling Advice:	Avoid repeated freeze-thaw cycles.
Storage:	-20 °C
Storage Comment:	For short term use, store at 2-8°C up to 1 week. For long term storage, store at -20°C in small aliquots to prevent freeze-thaw cycles.



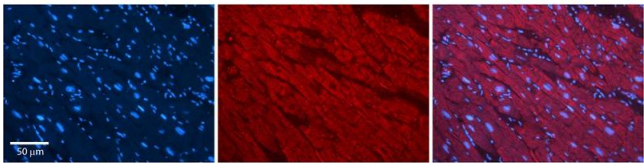
Western Blotting

**Image 1.** WB Suggested Anti-SLC25A12 Antibody Titration: 0.2-1 ug/ml ELISA Titer: 1:312500 Positive Control: COLO205 cell lysate SLC25A12 is supported by BioGPS gene expression data to be expressed in COLO205



Western Blotting

**Image 2.** WB Suggested Anti-SLC25A12 antibody Titration: 1 ug/mL Sample Type: Human heart



Immunohistochemistry

**Image 3.** Rabbit Anti-SLC25A12 Antibody Formalin Fixed Paraffin Embedded Tissue: Human Adult heart Observed Staining: Cytoplasmic Primary Antibody Concentration: 1:100 Secondary Antibody: Donkey anti-Rabbit-Cy2/3 Secondary Antibody Concentration: 1:200 Magnification: 20X Exposure Time: 0.5 – 2.0 sec Protocol located in Reviews and Data.