

Datasheet for ABIN2781597

anti-SLC7A7 antibody (Middle Region)

4 Images

[Go to Product page](#)

Overview

Quantity:	100 µL
Target:	SLC7A7 (Slc7a7)
Binding Specificity:	Middle Region
Reactivity:	Human, Mouse, Cow, Horse, Rabbit, Dog, Guinea Pig, Pig, Rat
Host:	Rabbit
Clonality:	Polyclonal
Conjugate:	This SLC7A7 antibody is un-conjugated
Application:	Western Blotting (WB)

Product Details

Immunogen:	The immunogen is a synthetic peptide directed towards the middle region of human SLC7A7
Sequence:	WGTLVQDIFT YAKVLALIAV IVAGIVRLGQ GASTHFENSF EGSSFAVGDI
Predicted Reactivity:	Cow: 100%, Dog: 86%, Guinea Pig: 79%, Horse: 100%, Human: 100%, Mouse: 79%, Pig: 93%, Rabbit: 100%, Rat: 79%
Characteristics:	This is a rabbit polyclonal antibody against SLC7A7. It was validated on Western Blot using a cell lysate as a positive control.
Purification:	Affinity Purified

Target Details

Target:	SLC7A7 (Slc7a7)
---------	-----------------

Target Details

Alternative Name:	SLC7A7 (Slc7a7 Products)
Background:	<p>The protein encoded by this gene is the light subunit of a cationic amino acid transporter. This sodium-independent transporter is formed when the light subunit encoded by this gene dimerizes with the heavy subunit transporter protein SLC3A2. This transporter is found in epithelial cell membranes where it transfers cationic and large neutral amino acids from the cell to the extracellular space. Defects in this gene are a cause of lysinuric protein intolerance (LPI). Several transcript variants encoding the same protein have been found for this gene.</p> <p>Alias Symbols: LAT3, LPI, Y+LAT1, y+LAT-1, MOP-2</p> <p>Protein Interaction Partner: NEDD4L, SLC3A2,</p> <p>Protein Size: 511</p>
Molecular Weight:	56 kDa
Gene ID:	9056
NCBI Accession:	NM_003982 , NP_003973
UniProt:	Q9UM01

Application Details

Application Notes:	Optimal working dilutions should be determined experimentally by the investigator.
Comment:	Antigen size: 511 AA
Restrictions:	For Research Use only

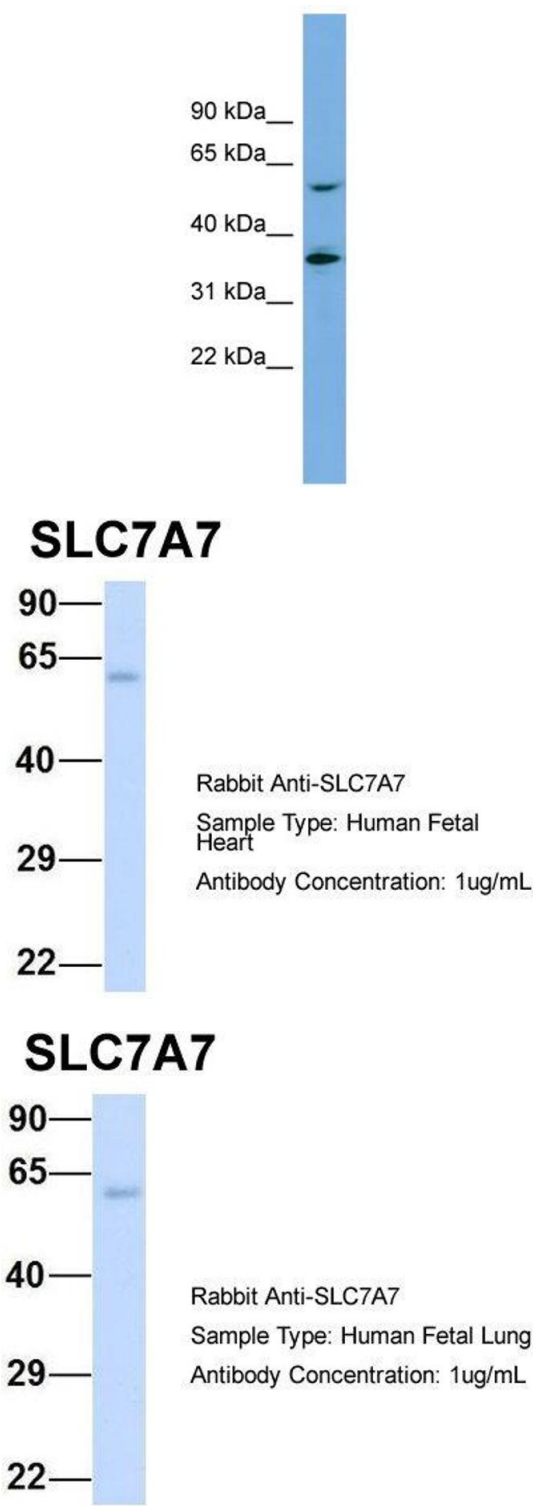
Handling

Format:	Liquid
Concentration:	Lot specific
Buffer:	Liquid. Purified antibody supplied in 1x PBS buffer with 0.09 % (w/v) sodium azide and 2 % sucrose.
Preservative:	Sodium azide
Precaution of Use:	This product contains Sodium azide: a POISONOUS AND HAZARDOUS SUBSTANCE which should be handled by trained staff only.
Handling Advice:	Avoid repeated freeze-thaw cycles.
Storage:	-20 °C

Handling

Storage Comment: For short term use, store at 2-8°C up to 1 week. For long term storage, store at -20°C in small aliquots to prevent freeze-thaw cycles.

Images



Western Blotting

Image 1. WB Suggested Anti-SLC7A7 Antibody Titration: 0.2-1 ug/ml Positive Control: PANC1 cell lysate

Western Blotting

Image 2. Host: Rabbit Target Name: SLC7A7 Sample Type: Human Fetal Heart Antibody Dilution: 1.0ug/ml

Western Blotting

Image 3. Host: Rabbit Target Name: SLC7A7 Sample Type: Human Fetal Lung Antibody Dilution: 1.0ug/ml

Please check the [product details page](#) for more images. Overall 4 images are available for ABIN2781597.