

Datasheet for ABIN2781598
anti-SLC13A2 antibody (Middle Region)[Go to Product page](#)

2 Images

Overview

Quantity:	100 µL
Target:	SLC13A2
Binding Specificity:	Middle Region
Reactivity:	Human, Pig, Cow, Rat, Guinea Pig, Rabbit, Dog
Host:	Rabbit
Clonality:	Polyclonal
Conjugate:	This SLC13A2 antibody is un-conjugated
Application:	Western Blotting (WB), Immunohistochemistry (IHC)

Product Details

Immunogen:	The immunogen is a synthetic peptide directed towards the middle region of human SLC13A2
Sequence:	PNAKGESMVS DGTVAIFIGI IMFIIPSKFP GLTQDPENPG KLKAPLGLLD
Predicted Reactivity:	Cow: 79%, Dog: 77%, Guinea Pig: 75%, Human: 100%, Pig: 79%, Rabbit: 85%, Rat: 93%
Characteristics:	This is a rabbit polyclonal antibody against SLC13A2. It was validated on Western Blot using a cell lysate as a positive control.
Purification:	Affinity Purified

Target Details

Target:	SLC13A2
Alternative Name:	SLC13A2 (SLC13A2 Products)

Target Details

Background:	SLC13A2 belongs to the SLC13A transporter (TC 2.A.47) family, NADC subfamily. It is a multi-pass membrane protein. SLC13A2 cotransports of sodium ions and dicarboxylates such as succinate and citrate. Alias Symbols: NADC1, NaDC-1, NaCT, SDCT1 Protein Size: 592
Molecular Weight:	64 kDa
Gene ID:	9058
NCBI Accession:	NM_003984 , NP_003975
UniProt:	Q13183

Application Details

Application Notes:	Optimal working dilutions should be determined experimentally by the investigator.
Comment:	Antigen size: 592 AA
Restrictions:	For Research Use only

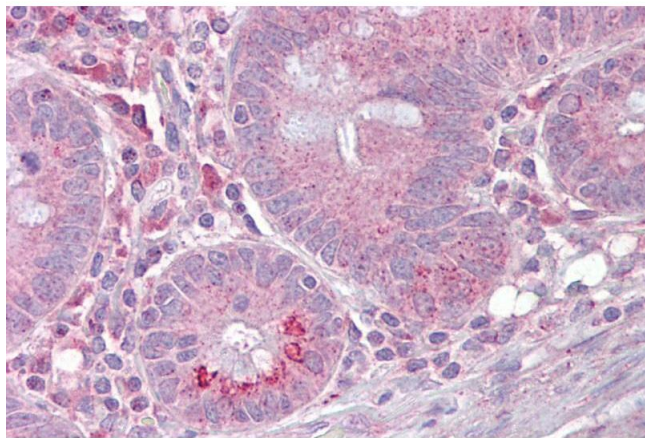
Handling

Format:	Liquid
Concentration:	Lot specific
Buffer:	Liquid. Purified antibody supplied in 1x PBS buffer with 0.09 % (w/v) sodium azide and 2 % sucrose.
Preservative:	Sodium azide
Precaution of Use:	This product contains Sodium azide: a POISONOUS AND HAZARDOUS SUBSTANCE which should be handled by trained staff only.
Handling Advice:	Avoid repeated freeze-thaw cycles.
Storage:	-20 °C
Storage Comment:	For short term use, store at 2-8°C up to 1 week. For long term storage, store at -20°C in small aliquots to prevent freeze-thaw cycles.



Western Blotting

Image 1. WB Suggested Anti-SLC13A2 Antibody Titration: 0.2-1 ug/ml ELISA Titer: 1:1562500 Positive Control: 721_B cell lysate



Immunohistochemistry

Image 2. Immunohistochemistry with Small intestine tissue at an antibody concentration of 5µg/ml using anti-SLC13A2 antibody (ARP43864_P050)