

Datasheet for ABIN2781602
anti-SLC6A5 antibody (N-Term)[Go to Product page](#)

3 Images

Overview

Quantity:	100 µL
Target:	SLC6A5
Binding Specificity:	N-Term
Reactivity:	Human, Rat, Mouse, Dog, Guinea Pig, Horse, Rabbit, Cow, Zebrafish (Danio rerio)
Host:	Rabbit
Clonality:	Polyclonal
Conjugate:	This SLC6A5 antibody is un-conjugated
Application:	Western Blotting (WB), Immunohistochemistry (IHC)

Product Details

Immunogen:	The immunogen is a synthetic peptide directed towards the N-terminal region of human SLC6A5
Sequence:	KNSTFCMTAY PNVTMVNFTS QANKTFVSGS EEYFKYFVLK ISAGIEYPGE
Predicted Reactivity:	Cow: 100%, Dog: 100%, Guinea Pig: 100%, Horse: 100%, Human: 100%, Mouse: 100%, Rabbit: 100%, Rat: 100%, Zebrafish: 85%
Characteristics:	This is a rabbit polyclonal antibody against SLC6A5. It was validated on Western Blot.
Purification:	Affinity Purified

Target Details

Target:	SLC6A5
---------	--------

Target Details

Alternative Name:	SLC6A5 (SLC6A5 Products)
Background:	<p>This gene encodes a sodium- and chloride-dependent glycine neurotransmitter transporter. This integral membrane glycoprotein is responsible for the clearance of extracellular glycine during glycine-mediated neurotransmission. This protein is found in glycinergic axons and maintains a high presynaptic pool of neurotransmitter at glycinergic synapses. Mutations in this gene cause hyperekplexia, a heterogenous neurological disorder characterized by exaggerated startle responses and neonatal apnea. Two transcript variants encoding different isoforms have been found for this gene.</p> <p>Alias Symbols: NET1, GLYT2, HKPX3, GLYT-2</p> <p>Protein Size: 395</p>
Molecular Weight:	43 kDa
Gene ID:	9152
NCBI Accession:	NM_004211 , NP_004202
UniProt:	Q9Y345

Application Details

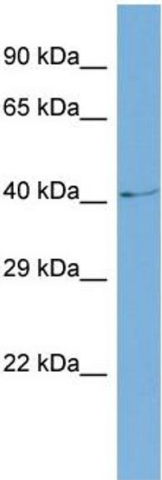
Application Notes:	Optimal working dilution should be determined by the investigator.
Restrictions:	For Research Use only

Handling

Format:	Liquid
Concentration:	1 mg/mL
Buffer:	Liquid. Purified antibody supplied in 1x PBS buffer with 0.09 % (w/v) sodium azide and 2 % sucrose.
Preservative:	Sodium azide
Precaution of Use:	This product contains Sodium azide: a POISONOUS AND HAZARDOUS SUBSTANCE which should be handled by trained staff only.
Handling Advice:	Avoid repeat freeze-thaw cycles.
Storage:	-20 °C
Storage Comment:	For short term use, store at 2-8°C up to 1 week. For long term storage, store at -20°C in small

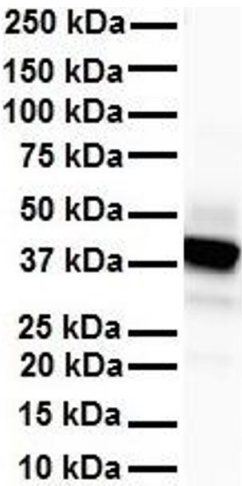
aliquots to prevent freeze-thaw cycles.

Images



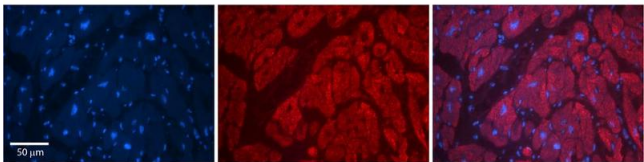
Western Blotting

Image 1. Host: Rabbit Target Name: SLC6A5 Sample Type: COLO205 Whole cell lysates Antibody Dilution: 1.0ug/ml



Western Blotting

Image 2. WB Suggested Anti-SLC6A5 antibody Titration: 1 ug/mL Sample Type: Human heart



Immunohistochemistry

Image 3. Rabbit Anti-SLC6A5 Antibody Formalin Fixed Paraffin Embedded Tissue: Human Adult heart Observed Staining: Cytoplasmic Primary Antibody Concentration: 1:600 Secondary Antibody: Donkey anti-Rabbit-Cy2/3 Secondary Antibody Concentration: 1:200 Magnification: 20X Exposure Time: 0.5 – 2.0 sec Protocol located in Reviews and Data.