

Datasheet for ABIN2781605  
**anti-SLC22A13 antibody (N-Term)**[Go to Product page](#)

## 1 Image

## Overview

Quantity:	100 µL
Target:	SLC22A13
Binding Specificity:	N-Term
Reactivity:	Human, Mouse, Rat, Horse, Pig, Dog
Host:	Rabbit
Clonality:	Polyclonal
Conjugate:	This SLC22A13 antibody is un-conjugated
Application:	Western Blotting (WB)

## Product Details

Immunogen:	The immunogen is a synthetic peptide directed towards the N terminal region of human SLC22A13
Sequence:	FFAHVFMVLD EPHHCAVAWV KNHTFNLSAA EQLVLSVPLD TAGHPEPCLM
Predicted Reactivity:	Dog: 93%, Horse: 100%, Human: 100%, Mouse: 100%, Pig: 79%, Rat: 100%
Characteristics:	This is a rabbit polyclonal antibody against SLC22A13. It was validated on Western Blot using a cell lysate as a positive control.
Purification:	Affinity Purified

## Target Details

Target:	SLC22A13
---------	----------

## Target Details

Alternative Name:	SLC22A13 ( <a href="#">SLC22A13 Products</a> )
Background:	<p>SLC22A13 is a member of the organic-cation transporter family. SLC22A13 is a transmembrane protein involved in the transport of small molecules. This protein can function to mediate urate uptake and is a high affinity nicotinate exchanger in the kidneys and the intestine. This gene encodes a member of the organic-cation transporter family. It is located in a gene cluster with another member of the family, organic cation transporter like 4. The encoded protein is a transmembrane protein which is thought to transport small molecules and since this protein is conserved among several species, it is suggested to have a fundamental role in mammalian systems.</p> <p>PRIMARYREFSEQ_SPAN PRIMARY_IDENTIFIER PRIMARY_SPAN COMP 1-28 DA629093.1 1-28 29-485 AB010438.1 1-457 486-1375 BC035973.1 486-1375 1376-1554 AB010438.1 1348-1526 1555-2555 BC035973.1 1533-2533</p> <p>Alias Symbols: OCTL1, OCTL3, ORCTL3, OAT10, ORCTL-3</p> <p>Protein Size: 551</p>
Molecular Weight:	61 kDa
Gene ID:	9390
NCBI Accession:	<a href="#">NM_004256</a> , <a href="#">NP_004247</a>
UniProt:	<a href="#">Q9Y226</a>

## Application Details

Application Notes:	Optimal working dilutions should be determined experimentally by the investigator.
Comment:	Antigen size: 551 AA
Restrictions:	For Research Use only

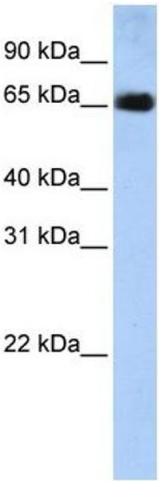
## Handling

Format:	Liquid
Concentration:	Lot specific
Buffer:	Liquid. Purified antibody supplied in 1x PBS buffer with 0.09 % (w/v) sodium azide and 2 % sucrose.
Preservative:	Sodium azide
Precaution of Use:	This product contains Sodium azide: a POISONOUS AND HAZARDOUS SUBSTANCE which should be handled by trained staff only.

## Handling

Handling Advice:	Avoid repeated freeze-thaw cycles.
Storage:	-20 °C
Storage Comment:	For short term use, store at 2-8°C up to 1 week. For long term storage, store at -20°C in small aliquots to prevent freeze-thaw cycles.

## Images



### Western Blotting

**Image 1.** WB Suggested Anti-SLC22A13 Antibody Titration:  
0.2-1 ug/ml ELISA Titer: 1:312500 Positive Control: Human Placenta