

Datasheet for ABIN2781609

anti-SLC24A1 antibody (Middle Region)[Go to Product page](#)**1** Image

Overview

Quantity:	100 µL
Target:	SLC24A1
Binding Specificity:	Middle Region
Reactivity:	Human, Rat, Dog
Host:	Rabbit
Clonality:	Polyclonal
Conjugate:	This SLC24A1 antibody is un-conjugated
Application:	Western Blotting (WB)

Product Details

Immunogen:	The immunogen is a synthetic peptide directed towards the middle region of human SLC24A1
Sequence:	EQLSRRPVAK VMALEDLSKP GDGAIAVDEL QDNKKLKLPS LLTRGSSSTS
Predicted Reactivity:	Dog: 79%, Human: 100%, Rat: 93%
Characteristics:	This is a rabbit polyclonal antibody against SLC24A1. It was validated on Western Blot using a cell lysate as a positive control.
Purification:	Affinity Purified

Target Details

Target:	SLC24A1
Alternative Name:	SLC24A1 (SLC24A1 Products)

Target Details

Background:	<p>SLC24A1 belongs to a family of potassium-dependent sodium/calcium exchangers. Members of this family have 2 large hydrophilic loops and 2 sets of multiple transmembrane-spanning segments.SLC24A1 belongs to a family of potassium-dependent sodium/calcium exchangers. Members of this family have 2 large hydrophilic loops and 2 sets of multiple transmembrane-spanning segments (Schnetkamp, 2004 [PubMed 14770312]).[supplied by OMIM].</p> <p>Alias Symbols: HsT17412, KIAA0702, NCKX, NCKX1, RODX, CSNB1D</p> <p>Protein Interaction Partner: SLC24A1, CNGA1,</p> <p>Protein Size: 1099</p>
Molecular Weight:	121 kDa
Gene ID:	9187
NCBI Accession:	NM_004727 , NP_004718
UniProt:	O60721
Pathways:	Phototransduction

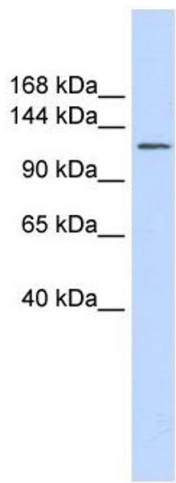
Application Details

Application Notes:	Optimal working dilutions should be determined experimentally by the investigator.
Comment:	Antigen size: 1099 AA
Restrictions:	For Research Use only

Handling

Format:	Liquid
Concentration:	Lot specific
Buffer:	Liquid. Purified antibody supplied in 1x PBS buffer with 0.09 % (w/v) sodium azide and 2 % sucrose.
Preservative:	Sodium azide
Precaution of Use:	This product contains Sodium azide: a POISONOUS AND HAZARDOUS SUBSTANCE which should be handled by trained staff only.
Handling Advice:	Avoid repeated freeze-thaw cycles.
Storage:	-20 °C
Storage Comment:	For short term use, store at 2-8°C up to 1 week. For long term storage, store at -20°C in small

aliquots to prevent freeze-thaw cycles.



Western Blotting

Image 1. WB Suggested Anti-SLC24A1 Antibody Titration: 0.2-1 ug/ml ELISA Titer: 1:1562500 Positive Control: Human brain