

Datasheet for ABIN2781611  
**anti-SLC33A1 antibody (Middle Region)**[Go to Product page](#)

## 8 Images

## Overview

Quantity:	100 µL
Target:	SLC33A1
Binding Specificity:	Middle Region
Reactivity:	Human, Mouse, Rat, Horse, Rabbit, Zebrafish (Danio rerio), Cow, Dog, Guinea Pig
Host:	Rabbit
Clonality:	Polyclonal
Conjugate:	This SLC33A1 antibody is un-conjugated
Application:	Western Blotting (WB), Immunohistochemistry (IHC)

## Product Details

Immunogen:	The immunogen is a synthetic peptide directed towards the middle region of human SLC33A1
Sequence:	CNSVGQTAGY FLGNVLFLAL ESADFCNKYL RFQPQPRGIV TLSDFLFFWG
Predicted Reactivity:	Cow: 93%, Dog: 93%, Guinea Pig: 93%, Horse: 100%, Human: 100%, Mouse: 100%, Rabbit: 100%, Rat: 100%, Zebrafish: 86%
Characteristics:	This is a rabbit polyclonal antibody against SLC33A1. It was validated on Western Blot using a cell lysate as a positive control.
Purification:	Affinity Purified

## Target Details

Target:	SLC33A1
---------	---------

## Target Details

Alternative Name:	SLC33A1 ( <a href="#">SLC33A1 Products</a> )
Background:	<p>SLC33A1 is required for the formation of O-acetylated (Ac) gangliosides. It is predicted to contain 6 to 10 transmembrane domains, and a leucine zipper motif in transmembrane domain III. Studies indicate that the protein is localized to the cytoplasm. The encoded protein is required for the formation of O-acetylated (Ac) gangliosides. It is predicted to contain 6 to 10 transmembrane domains, and a leucine zipper motif in transmembrane domain III. Studies indicate that the protein is localized to the cytoplasm.</p> <p>Alias Symbols: ACATN, AT-1, AT1, SPG42, CCHLND</p> <p>Protein Interaction Partner: UBC, UBD,</p> <p>Protein Size: 549</p>
Molecular Weight:	61 kDa
Gene ID:	9197
NCBI Accession:	<a href="#">NM_004733</a> , <a href="#">NP_004724</a>
UniProt:	<a href="#">O00400</a>

## Application Details

Application Notes:	Optimal working dilutions should be determined experimentally by the investigator.
Comment:	Antigen size: 549 AA
Restrictions:	For Research Use only

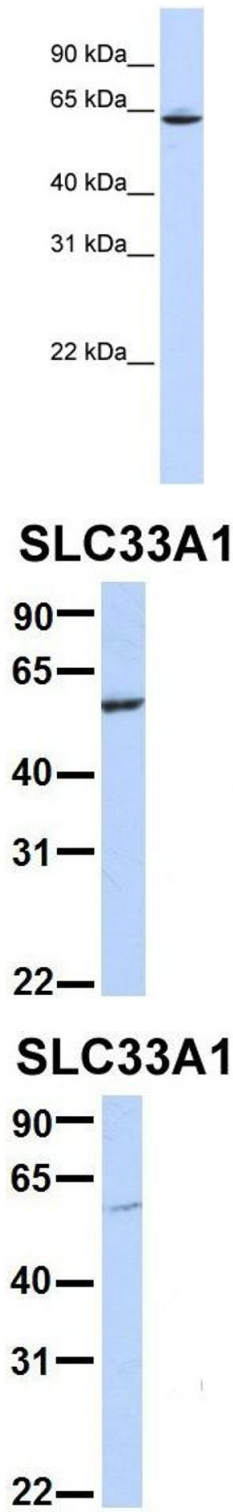
## Handling

Format:	Liquid
Concentration:	Lot specific
Buffer:	Liquid. Purified antibody supplied in 1x PBS buffer with 0.09 % (w/v) sodium azide and 2 % sucrose.
Preservative:	Sodium azide
Precaution of Use:	This product contains Sodium azide: a POISONOUS AND HAZARDOUS SUBSTANCE which should be handled by trained staff only.
Handling Advice:	Avoid repeated freeze-thaw cycles.
Storage:	-20 °C

Handling

Storage Comment: For short term use, store at 2-8°C up to 1 week. For long term storage, store at -20°C in small aliquots to prevent freeze-thaw cycles.

Images



**Western Blotting**

**Image 1.** WB Suggested Anti-SLC33A1 Antibody Titration: 0.2-1 ug/ml ELISA Titer: 1:62500 Positive Control: Human Placenta

**Western Blotting**

**Image 2.** Host: Rabbit Target Name: WT1 Sample Type: 721\_B Antibody Dilution: 1.0ug/ml SLC33A1 is supported by BioGPS gene expression data to be expressed in 721\_B

**Western Blotting**

**Image 3.** Host: Rabbit Target Name: EGFL8 Sample Type: Hela Antibody Dilution: 1.0ug/ml SLC33A1 is strongly supported by BioGPS gene expression data to be expressed in Human HeLa cells

Please check the [product details page](#) for more images. Overall 8 images are available for ABIN2781611.