

Datasheet for ABIN2781618  
**anti-SLC01A2 antibody (Middle Region)**[Go to Product page](#)

## 2 Images

## Overview

Quantity:	100 µL
Target:	SLC01A2
Binding Specificity:	Middle Region
Reactivity:	Human, Rat, Mouse, Cow, Dog, Guinea Pig, Horse, Rabbit
Host:	Rabbit
Clonality:	Polyclonal
Conjugate:	This SLC01A2 antibody is un-conjugated
Application:	Western Blotting (WB)

## Product Details

Immunogen:	The immunogen is a synthetic peptide directed towards the middle region of human SLC01A2
Sequence:	AIIGPLIGLL LASFCANVYV DTGCVNTDDL IITPTDTRWV GAWWFGFLIC
Predicted Reactivity:	Cow: 86%, Dog: 93%, Guinea Pig: 93%, Horse: 86%, Human: 100%, Mouse: 93%, Rabbit: 93%, Rat: 93%
Characteristics:	This is a rabbit polyclonal antibody against SLC01A2. It was validated on Western Blot using a cell lysate as a positive control.
Purification:	Affinity Purified

## Target Details

Target:	SLC01A2
---------	---------

## Target Details

Alternative Name:	SLC01A2 ( <a href="#">SLC01A2 Products</a> )
Background:	<p>SLC01A2 is a sodium-independent transporter which mediates cellular uptake of organic ions in the liver. Its substrates include bile acids, bromosulphophthalein, and some steroidal compounds. The protein is a member of the SLC21A family of solute carriers. This gene encodes a sodium-independent transporter which mediates cellular uptake of organic ions in the liver. Its substrates include bile acids, bromosulphophthalein, and some steroidal compounds. The protein is a member of the SLC21A family of solute carriers. Alternate splicing of this gene results in three transcript variants encoding two different isoforms.</p> <p>Alias Symbols: OATP, OATP-A, OATP1A2, SLC21A3</p> <p>Protein Interaction Partner: PDZD3, SLC9A3R2, SLC9A3R1, PDZK1,</p> <p>Protein Size: 579</p>
Molecular Weight:	64 kDa
Gene ID:	6579
NCBI Accession:	<a href="#">NM_005075</a> , <a href="#">NP_005066</a>

## Application Details

Application Notes:	Optimal working dilutions should be determined experimentally by the investigator.
Comment:	Antigen size: 579 AA
Restrictions:	For Research Use only

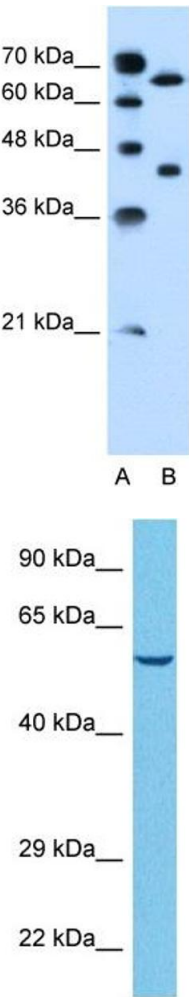
## Handling

Format:	Liquid
Concentration:	Lot specific
Buffer:	Liquid. Purified antibody supplied in 1x PBS buffer with 0.09 % (w/v) sodium azide and 2 % sucrose.
Preservative:	Sodium azide
Precaution of Use:	This product contains Sodium azide: a POISONOUS AND HAZARDOUS SUBSTANCE which should be handled by trained staff only.
Handling Advice:	Avoid repeated freeze-thaw cycles.
Storage:	-20 °C

Handling

Storage Comment: For short term use, store at 2-8°C up to 1 week. For long term storage, store at -20°C in small aliquots to prevent freeze-thaw cycles.

Images



Western Blotting

**Image 1.** WB Suggested Anti-SLC01A2 Antibody Titration:  
0.2-1 ug/ml Positive Control: Jurkat cell lysate

Western Blotting

**Image 2.** Host: Rabbit Target Name: SLC01A2 Sample  
Tissue: Human Hela Whole Cell Antibody Dilution: 1ug/ml