

Datasheet for ABIN2781619  
**anti-SLC01A2 antibody (Middle Region)**[Go to Product page](#)

## 2 Images

## Overview

Quantity:	100 µL
Target:	SLC01A2
Binding Specificity:	Middle Region
Reactivity:	Human, Rat, Mouse, Cow, Dog, Guinea Pig, Horse, Rabbit
Host:	Rabbit
Clonality:	Polyclonal
Conjugate:	This SLC01A2 antibody is un-conjugated
Application:	Western Blotting (WB), Immunohistochemistry (IHC)

## Product Details

Immunogen:	The immunogen is a synthetic peptide directed towards the middle region of human SLC01A2
Sequence:	VCGNNGLSYL SACLAGEETS IGTGINMVFQ NCSCIQTSGN SSAVLGLCDK
Predicted Reactivity:	Cow: 93%, Dog: 100%, Guinea Pig: 93%, Horse: 93%, Human: 100%, Mouse: 93%, Rabbit: 79%, Rat: 93%
Characteristics:	This is a rabbit polyclonal antibody against SLC01A2. It was validated on Western Blot.
Purification:	Affinity Purified

## Target Details

Target:	SLC01A2
Alternative Name:	SLC01A2 ( <a href="#">SLC01A2 Products</a> )

## Target Details

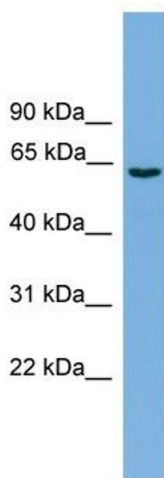
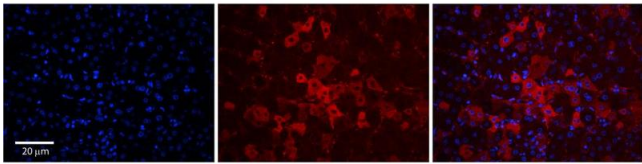
Background:	<p>SLC01A2 is a sodium-independent transporter which mediates cellular uptake of organic ions in the liver. Its substrates include bile acids, bromosulphophthalein, and some steroidal compounds. The protein is a member of the SLC21A family of solute carriers.</p> <p>Alias Symbols: OATP, OATP-A, OATP1A2, SLC21A3</p> <p>Protein Interaction Partner: PDZD3, SLC9A3R2, SLC9A3R1, PDZK1,</p> <p>Protein Size: 579</p>
Molecular Weight:	64 kDa
Gene ID:	6579
NCBI Accession:	<a href="#">NM_021094</a>

## Application Details

Application Notes:	Optimal working dilutions should be determined experimentally by the investigator.
Comment:	Antigen size: 579 AA
Restrictions:	For Research Use only

## Handling

Format:	Liquid
Concentration:	Lot specific
Buffer:	Liquid. Purified antibody supplied in 1x PBS buffer with 0.09 % (w/v) sodium azide and 2 % sucrose.
Preservative:	Sodium azide
Precaution of Use:	This product contains Sodium azide: a POISONOUS AND HAZARDOUS SUBSTANCE which should be handled by trained staff only.
Handling Advice:	Avoid repeated freeze-thaw cycles.
Storage:	-20 °C
Storage Comment:	For short term use, store at 2-8°C up to 1 week. For long term storage, store at -20°C in small aliquots to prevent freeze-thaw cycles.



### Immunohistochemistry

**Image 1.** Rabbit Anti-SLC01A2 Antibody Catalog Number: ARP43899\_P050 Formalin Fixed Paraffin Embedded Tissue: Human Adult Liver Observed Staining: Membrane, Cytoplasm in hepatocytes, very strong, moderate tissue distribution Primary Antibody Concentration: 1:100 Secondary Antibody: Donkey anti-Rabbit-Cy3 Secondary Antibody Concentration: 1:200 Magnification: 20X Exposure Time: 0.5 -2.0 sec Protocol located in Reviews and Data.

### Western Blotting

**Image 2.** WB Suggested Anti-SLC01A2 Antibody Titration: 0.2-1 ug/ml ELISA Titer: 1:312500 Positive Control: PANC1 cell lysate SLC01A2 is strongly supported by BioGPS gene expression data to be expressed in Human PANC1 cells