

Datasheet for ABIN2781624

**anti-Slc25a1 antibody (Middle Region)**[Go to Product page](#)**1** Image

## Overview

Quantity:	100 µL
Target:	Slc25a1
Binding Specificity:	Middle Region
Reactivity:	Human, Mouse, Rat, Cow, Dog, Guinea Pig, Horse, Rabbit, Saccharomyces cerevisiae, Zebrafish (Danio rerio)
Host:	Rabbit
Clonality:	Polyclonal
Conjugate:	This Slc25a1 antibody is un-conjugated
Application:	Western Blotting (WB)

## Product Details

Immunogen:	The immunogen is a synthetic peptide directed towards the middle region of human SLC25A1
Sequence:	NKPMNPLITG VFGAIAGAAS VFGNTPLDVI KTRMQGLEAH KYRNTWDCGL
Predicted Reactivity:	Cow: 100%, Dog: 100%, Guinea Pig: 100%, Horse: 100%, Human: 100%, Mouse: 100%, Rabbit: 100%, Rat: 100%, Yeast: 100%, Zebrafish: 100%
Characteristics:	This is a rabbit polyclonal antibody against SLC25A1. It was validated on Western Blot using a cell lysate as a positive control.
Purification:	Affinity Purified

## Target Details

Target:	Slc25a1
---------	---------

## Target Details

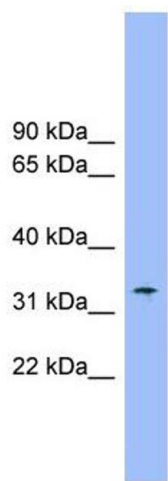
Alternative Name:	SLC25A1 ( <a href="#">Slc25a1 Products</a> )
Background:	<p>The mitochondrial tricarboxylate transporter (also called citrate transport protein, or CTP) is responsible for the movement of citrate across the mitochondrial inner membrane (summarized by Kaplan et al., 1993 [PubMed 8514800]).</p> <p>Alias Symbols: CTP, SLC20A3, SEA</p> <p>Protein Interaction Partner: PCSK9, NEDD8, ASB14, ASB10, ASB17, PARK2, FBXO6, CLN5, CLN3, FN1, VKORC1, FAM162A, RPS26, UBD, SUMO1, UBC, HDAC5, AGO4, MYC, ICT1, MAGED1,</p> <p>Protein Size: 311</p>
Molecular Weight:	34 kDa
Gene ID:	6576
NCBI Accession:	<a href="#">NM_005984</a> , <a href="#">NP_005975</a>
UniProt:	<a href="#">P32089</a>

## Application Details

Application Notes:	Optimal working dilutions should be determined experimentally by the investigator.
Comment:	Antigen size: 311 AA
Restrictions:	For Research Use only

## Handling

Format:	Liquid
Concentration:	Lot specific
Buffer:	Liquid. Purified antibody supplied in 1x PBS buffer with 0.09 % (w/v) sodium azide and 2 % sucrose.
Preservative:	Sodium azide
Precaution of Use:	This product contains Sodium azide: a POISONOUS AND HAZARDOUS SUBSTANCE which should be handled by trained staff only.
Handling Advice:	Avoid repeated freeze-thaw cycles.
Storage:	-20 °C
Storage Comment:	For short term use, store at 2-8°C up to 1 week. For long term storage, store at -20°C in small aliquots to prevent freeze-thaw cycles.



Western Blotting

**Image 1.** WB Suggested Anti-SLC25A1 Antibody Titration:  
0.2-1 ug/ml Positive Control: Human Stomach