



[Go to Product page](#)

Datasheet for ABIN2781627

anti-SLC02B1 antibody (N-Term)

5 Images

Overview

Quantity:	100 µL
Target:	SLC02B1
Binding Specificity:	N-Term
Reactivity:	Human, Mouse, Rat, Cow, Dog, Rabbit, Guinea Pig, Horse, Zebrafish (Danio rerio)
Host:	Rabbit
Clonality:	Polyclonal
Conjugate:	This SLC02B1 antibody is un-conjugated
Application:	Western Blotting (WB), Immunohistochemistry (IHC)

Product Details

Immunogen:	The immunogen is a synthetic peptide directed towards the N terminal region of human SLC02B1
Sequence:	DPQDVRPSVF HNIKLFVLCH SLLQLAQLMI SGYLKSSIST VEKRFGLSSQ
Predicted Reactivity:	Cow: 100%, Dog: 100%, Guinea Pig: 100%, Horse: 93%, Human: 100%, Mouse: 100%, Rabbit: 100%, Rat: 100%, Zebrafish: 79%
Characteristics:	This is a rabbit polyclonal antibody against SLC02B1. It was validated on Western Blot using a cell lysate as a positive control.
Purification:	Affinity Purified

Target Details

Target:	SLC02B1
---------	---------

Target Details

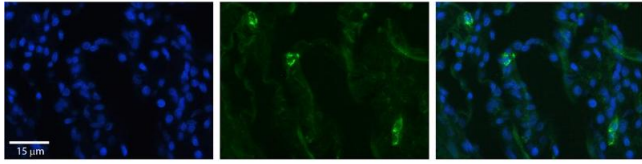
Alternative Name:	SLC02B1 (SLC02B1 Products)
Background:	SLC02B1 mediates the Na ⁺ -independent transport of organic anions such as taurocholate, the prostaglandins PGD2, PGE1, PGE2, leukotriene C4, thromboxane B2 and iloprost. Alias Symbols: DKFZp686E0517, KIAA0880, OATP-B, OATP2B1, OATPB, SLC21A9 Protein Interaction Partner: APP, Protein Size: 709
Molecular Weight:	77 kDa
Gene ID:	11309
NCBI Accession:	NM_007256 , NP_009187
UniProt:	O94956

Application Details

Application Notes:	Optimal working dilutions should be determined experimentally by the investigator.
Comment:	Antigen size: 709 AA
Restrictions:	For Research Use only

Handling

Format:	Liquid
Concentration:	Lot specific
Buffer:	Liquid. Purified antibody supplied in 1x PBS buffer with 0.09 % (w/v) sodium azide and 2 % sucrose.
Preservative:	Sodium azide
Precaution of Use:	This product contains Sodium azide: a POISONOUS AND HAZARDOUS SUBSTANCE which should be handled by trained staff only.
Handling Advice:	Avoid repeated freeze-thaw cycles.
Storage:	-20 °C
Storage Comment:	For short term use, store at 2-8°C up to 1 week. For long term storage, store at -20°C in small aliquots to prevent freeze-thaw cycles.



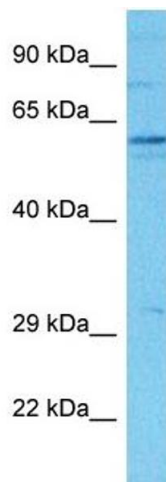
Immunohistochemistry

Image 1. Rabbit Anti-SLCO2B1 Antibody Formalin Fixed Paraffin Embedded Tissue: Human Lung Tissue Observed Staining: Membrane in alveolar type I cells Primary Antibody Concentration: 1:100 Other Working Concentrations: 1/600 Secondary Antibody: Donkey anti-Rabbit-Cy3 Secondary Antibody Concentration: 1:200 Magnification: 20X Exposure Time: 0.5 - 2.0 sec



Western Blotting

Image 2. WB Suggested Anti-SLCO2B1 Antibody Titration: 0.2-1 µg/ml ELISA Titer: 1:62500 Positive Control: HepG2 cell lysate SLCO2B1 is strongly supported by BioGPS gene expression data to be expressed in Human HepG2 cells



Western Blotting

Image 3. Host: Rabbit Target Name: SLCO2B1 Sample Tissue: Human Hela Whole Cell Antibody Dilution: 1µg/ml

Please check the [product details page](#) for more images. Overall 5 images are available for ABIN2781627.