

Datasheet for ABIN2781629

## anti-SLC7A8 antibody (Middle Region)



[Go to Product page](#)

2 Images

1 Publication

### Overview

Quantity:	100 µL
Target:	SLC7A8
Binding Specificity:	Middle Region
Reactivity:	Human, Mouse, Rat, Cow, Zebrafish (Danio rerio), Horse, Rabbit, Dog, Guinea Pig
Host:	Rabbit
Clonality:	Polyclonal
Conjugate:	This SLC7A8 antibody is un-conjugated
Application:	Western Blotting (WB)

### Product Details

Immunogen:	The immunogen is a synthetic peptide directed towards the middle region of human SLC7A8
Sequence:	PRAIFISIP L VTFVYVFANV AYTAMSPQE LLASNAVAVT FGEKLLGVMA
Specificity:	100 % homologous to isoforms 1 (58 kDa), 2 (37 kDa), 3 (35 kDa) and 4 (48 kDa).
Predicted Reactivity:	Cow: 100%, Dog: 93%, Guinea Pig: 100%, Horse: 100%, Human: 100%, Mouse: 100%, Rabbit: 100%, Rat: 100%, Zebrafish: 100%
Characteristics:	This is a rabbit polyclonal antibody against SLC7A8. It was validated on Western Blot using a cell lysate as a positive control.
Purification:	Protein A purified

## Target Details

Target:	SLC7A8
Alternative Name:	SLC7A8 ( <a href="#">SLC7A8 Products</a> )
Background:	<p>SLC7A8 is sodium-independent, high-affinity transport of large neutral amino acids. It has higher affinity for L-phenylalanine than LAT1 but lower affinity for glutamine and serine. L-alanine is transported at physiological concentrations. SLC7A8 also plays a role in basolateral (re)absorption of neutral amino acids.</p> <p>Alias Symbols: LAT2, LPI-PC1</p> <p>Protein Interaction Partner: SLC3A1, UBC, SLC3A2,</p> <p>Protein Size: 332</p>
Molecular Weight:	37 kDa
Gene ID:	23428
NCBI Accession:	<a href="#">NM_182728</a> , <a href="#">NP_877392</a>

## Application Details

Application Notes:	Optimal working dilutions should be determined experimentally by the investigator.
Comment:	Antigen size: 332 AA
Restrictions:	For Research Use only

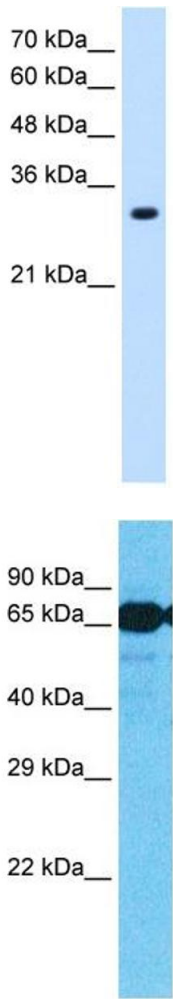
## Handling

Format:	Liquid
Concentration:	Lot specific
Buffer:	Liquid. Purified antibody supplied in 1x PBS buffer with 0.09 % (w/v) sodium azide and 2 % sucrose.
Preservative:	Sodium azide
Precaution of Use:	This product contains Sodium azide: a POISONOUS AND HAZARDOUS SUBSTANCE which should be handled by trained staff only.
Handling Advice:	Avoid repeated freeze-thaw cycles.
Storage:	-20 °C
Storage Comment:	For short term use, store at 2-8°C up to 1 week. For long term storage, store at -20°C in small aliquots to prevent freeze-thaw cycles.

Publications

Product cited in: Ewing, Chu, Elisma, Li, Taylor, Climie, McBroom-Cerajewski, Robinson, OConnor, Li, Taylor, Dharsee, Ho, Heilbut, Moore, Zhang, Ornatsky, Bukhman, Ethier, Sheng, Vasilescu, Abu-Farha, Lambert, Duewel et al.: "Large-scale mapping of human protein-protein interactions by mass spectrometry. ..." in: **Molecular systems biology**, Vol. 3, pp. 89, (2007) ([PubMed](#)).

Images



Western Blotting

**Image 1.** WB Suggested Anti-SLC7A8 Antibody Titration: 1.25ug/ml Positive Control: HepG2 cell lysate

Western Blotting

**Image 2.** Host: Rabbit Target Name: SLC7A8 Sample Type: Fetal Liver Cell lysates Antibody Dilution: 1.0ug/ml