

Datasheet for ABIN2781630

anti-SLC39A6 antibody (Middle Region)

6 Images

1 Publication

[Go to Product page](#)

Overview

Quantity:	100 µL
Target:	SLC39A6
Binding Specificity:	Middle Region
Reactivity:	Human, Mouse, Rat, Dog, Cow, Horse, Rabbit, Sheep, Guinea Pig
Host:	Rabbit
Clonality:	Polyclonal
Conjugate:	This SLC39A6 antibody is un-conjugated
Application:	Western Blotting (WB), Immunohistochemistry (IHC)

Product Details

Immunogen:	The immunogen is a synthetic peptide directed towards the middle region of human SLC39A6
Sequence:	RSCLIHTSEK KAEIPPKTYS LQIAWVGFI AISIISFLSL LGVILVPLMN
Predicted Reactivity:	Cow: 100%, Dog: 100%, Guinea Pig: 93%, Horse: 100%, Human: 100%, Mouse: 100%, Rabbit: 100%, Rat: 100%, Sheep: 100%
Characteristics:	This is a rabbit polyclonal antibody against SLC39A6. It was validated on Western Blot and immunohistochemistry.
Purification:	Protein A purified

Target Details

Target:	SLC39A6
---------	---------

Target Details

Alternative Name:	SLC39A6 (SLC39A6 Products)
Background:	<p>Zinc is an essential cofactor for hundreds of enzymes. It is involved in protein, nucleic acid, carbohydrate, and lipid metabolism, as well as in the control of gene transcription, growth, development, and differentiation. SLC39A6 belongs to a subfamily of proteins that show structural characteristics of zinc transporters.</p> <p>Alias Symbols: LIV-1</p> <p>Protein Interaction Partner: SUMO1, UBC, NEDD8, SPP1, KDM5B,</p> <p>Protein Size: 433</p>
Molecular Weight:	48 kDa
Gene ID:	25800
NCBI Accession:	NM_001099406 , NP_001092876
Pathways:	Transition Metal Ion Homeostasis

Application Details

Application Notes:	Optimal working dilutions should be determined experimentally by the investigator.
Comment:	Antigen size: 433 AA
Restrictions:	For Research Use only

Handling

Format:	Liquid
Concentration:	Lot specific
Buffer:	Liquid. Purified antibody supplied in 1x PBS buffer with 0.09 % (w/v) sodium azide and 2 % sucrose.
Preservative:	Sodium azide
Precaution of Use:	This product contains Sodium azide: a POISONOUS AND HAZARDOUS SUBSTANCE which should be handled by trained staff only.
Handling Advice:	Avoid repeated freeze-thaw cycles.
Storage:	-20 °C
Storage Comment:	For short term use, store at 2-8°C up to 1 week. For long term storage, store at -20°C in small aliquots to prevent freeze-thaw cycles.

Publications

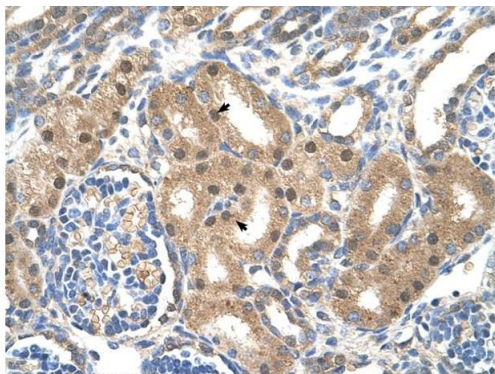
Product cited in: Spellman, Ahmed, Dubach, Gardiner: "Expression of trisomic proteins in Down syndrome model systems." in: **Gene**, Vol. 512, Issue 2, pp. 219-25, (2012) ([PubMed](#)).

Images



Western Blotting

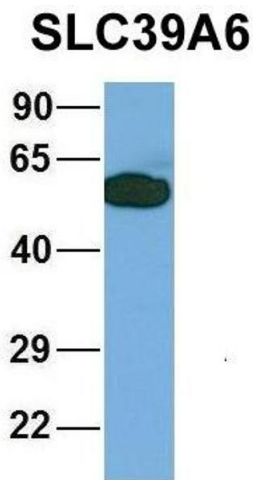
Image 1. WB Suggested Anti-SLC39A6 Antibody Titration:
1.25ug/ml Positive Control: Jurkat cell lysate



Rabbit Anti-SLC39A6 Antibody
Catalog Number: ARP43931
Lot Number: QC14097
Paraffin Embedded Tissue: Human Kidney
Cells with Positive label: Epithelial cells of renal tubule (Indicated with Arrows)
Antibody Concentration: 4.0-8.0 µg/ml
Magnification: 400X

Immunohistochemistry

Image 2. Human kidney



Western Blotting

Image 3. Host: Rabbit Target Name: HIRIP3 Sample Type: 293T Antibody Dilution: 1.0ug/ml SLC39A6 is strongly supported by BioGPS gene expression data to be expressed in HEK293T

Please check the [product details page](#) for more images. Overall 6 images are available for ABIN2781630.