

Datasheet for ABIN2781632

**anti-Solute Carrier Organic Anion Transporter Family, Member 3A1 (SLC03A1) (Middle Region) antibody**[Go to Product page](#)**2** Images

## Overview

Quantity:	100 µL
Target:	Solute Carrier Organic Anion Transporter Family, Member 3A1 (SLC03A1)
Binding Specificity:	Middle Region
Reactivity:	Human, Mouse, Rat, Cow, Guinea Pig, Horse, Rabbit, Zebrafish (Danio rerio), Dog
Host:	Rabbit
Clonality:	Polyclonal
Conjugate:	Un-conjugated
Application:	Western Blotting (WB)

## Product Details

Immunogen:	The immunogen is a synthetic peptide directed towards the middle region of human SLC03A1
Sequence:	MEIAVVAGFA AFLGKYLEQQ FNLTTSSANQ LLGMTAIPCA CLGIFLGLL
Predicted Reactivity:	Cow: 100%, Dog: 100%, Guinea Pig: 100%, Horse: 100%, Human: 100%, Mouse: 100%, Rabbit: 100%, Rat: 100%, Zebrafish: 100%
Characteristics:	This is a rabbit polyclonal antibody against SLC03A1. It was validated on Western Blot using a cell lysate as a positive control.
Purification:	Affinity Purified

## Target Details

Target:	Solute Carrier Organic Anion Transporter Family, Member 3A1 (SLC03A1)
---------	---

## Target Details

---

Alternative Name:	SLC03A1 ( <a href="#">SLC03A1 Products</a> )
Background:	<p>SLC03A1 mediates the Na<sup>+</sup>-independent transport of organic anions such as estrone-3-sulfate. It mediates transport of prostaglandins (PG) E1 and E2, thyroxine (T4), deltorphin II, BQ-123 and vasopressin, but not DPDPE (a derivative of enkephalin lacking an N-terminal tyrosine residue), estrone-3-sulfate, taurocholate, digoxin nor DHEAS.</p> <p>Alias Symbols: FLJ40478, OATP-D, OATP3A1, SLC21A11, OATPD</p> <p>Protein Interaction Partner: PDZD3, SLC9A3R2, SLC9A3R1,</p> <p>Protein Size: 710</p>
Molecular Weight:	76 kDa
Gene ID:	28232
NCBI Accession:	<a href="#">NM_013272</a> , <a href="#">NP_037404</a>
UniProt:	<a href="#">Q9UIG8</a>

## Application Details

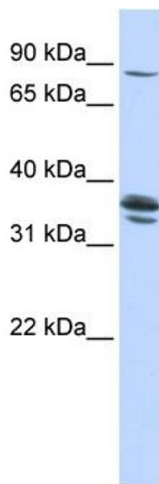
---

Application Notes:	Optimal working dilutions should be determined experimentally by the investigator.
Comment:	Antigen size: 710 AA
Restrictions:	For Research Use only

## Handling

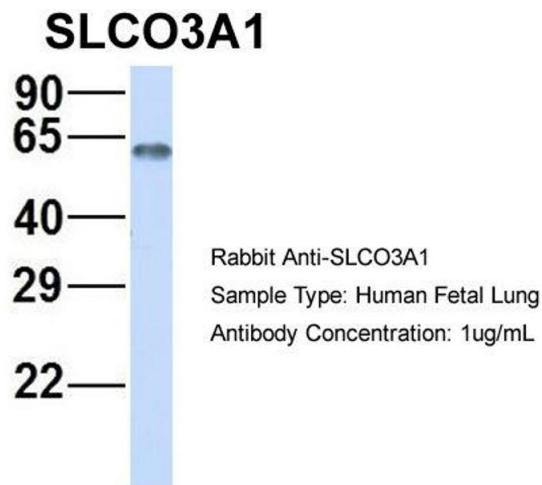
---

Format:	Liquid
Concentration:	Lot specific
Buffer:	Liquid. Purified antibody supplied in 1x PBS buffer with 0.09 % (w/v) sodium azide and 2 % sucrose.
Preservative:	Sodium azide
Precaution of Use:	This product contains Sodium azide: a POISONOUS AND HAZARDOUS SUBSTANCE which should be handled by trained staff only.
Handling Advice:	Avoid repeated freeze-thaw cycles.
Storage:	-20 °C
Storage Comment:	For short term use, store at 2-8°C up to 1 week. For long term storage, store at -20°C in small aliquots to prevent freeze-thaw cycles.



#### Western Blotting

**Image 1.** WB Suggested Anti-SLCO3A1 Antibody Titration:  
0.2-1 ug/ml ELISA Titer: 1:312500 Positive Control: 721\_B  
cell lysate



#### Western Blotting

**Image 2.** Host: Rabbit Target Name: SLCO3A1 Sample  
Type: Human Fetal Lung Antibody Dilution: 1.0ug/ml