

Datasheet for ABIN2781633
anti-MCT3 antibody (Middle Region)[Go to Product page](#)

2 Images

Overview

Quantity:	100 µL
Target:	MCT3
Binding Specificity:	Middle Region
Reactivity:	Human, Mouse, Rat, Cow, Guinea Pig, Dog, Horse, Rabbit, Zebrafish (Danio rerio)
Host:	Rabbit
Clonality:	Polyclonal
Conjugate:	This MCT3 antibody is un-conjugated
Application:	Western Blotting (WB), Immunohistochemistry (IHC)

Product Details

Immunogen:	The immunogen is a synthetic peptide directed towards the middle region of human SLC16A8
Sequence:	RAFAVYAVTK FLMALGLFVP AILLVNYAKD AGVPDTDAAF LLSIVGFVDI
Predicted Reactivity:	Cow: 86%, Dog: 92%, Guinea Pig: 100%, Horse: 86%, Human: 100%, Mouse: 86%, Rabbit: 86%, Rat: 93%, Zebrafish: 79%
Characteristics:	This is a rabbit polyclonal antibody against SLC16A8. It was validated on Western Blot and immunohistochemistry.
Purification:	Protein A purified

Target Details

Target:	MCT3
---------	------

Target Details

Alternative Name:	SLC16A8 (MCT3 Products)
Background:	<p>SLC16A8 is proton-linked monocarboxylate transporter. It catalyzes the rapid transport across the plasma membrane of many monocarboxylates such as lactate, pyruvate, branched-chain oxo acids derived from leucine, valine and isoleucine, and the ketone bodies acetoacetate, beta-hydroxybutyrate and acetate.</p> <p>Alias Symbols: MCT3, REMP</p> <p>Protein Interaction Partner: DNAJB9, RAB1A,</p> <p>Protein Size: 504</p>
Molecular Weight:	52 kDa
Gene ID:	23539
NCBI Accession:	NM_013356 , NP_037488
UniProt:	O95907

Application Details

Application Notes:	Optimal working dilutions should be determined experimentally by the investigator.
Comment:	Antigen size: 504 AA
Restrictions:	For Research Use only

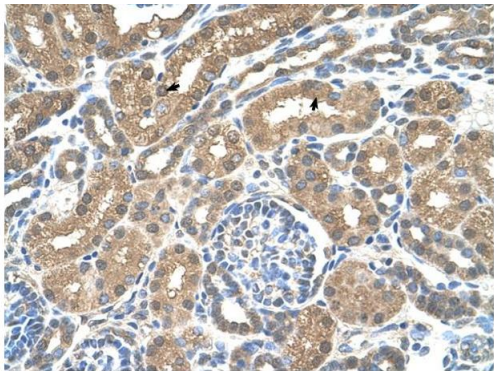
Handling

Format:	Liquid
Concentration:	Lot specific
Buffer:	Liquid. Purified antibody supplied in 1x PBS buffer with 0.09 % (w/v) sodium azide and 2 % sucrose.
Preservative:	Sodium azide
Precaution of Use:	This product contains Sodium azide: a POISONOUS AND HAZARDOUS SUBSTANCE which should be handled by trained staff only.
Handling Advice:	Avoid repeated freeze-thaw cycles.
Storage:	-20 °C
Storage Comment:	For short term use, store at 2-8°C up to 1 week. For long term storage, store at -20°C in small aliquots to prevent freeze-thaw cycles.



Western Blotting

Image 1. WB Suggested Anti-SLC16A8 Antibody Titration:
2.5ug/ml Positive Control: Jurkat cell lysate



Immunohistochemistry

Image 2. Human kidney

Rabbit Anti-SLC16A8 Antibody
Catalog Number: ARP43935
Lot Number: QC14101
Paraffin Embedded Tissue: Human Kidney
Cells with Positive label: Epithelial cells of renal tubule (Indicated with Arrows)
Antibody Concentration: 4.0-8.0 µg/ml
Magnification: 400X