

Datasheet for ABIN2781634
anti-SLC25A24 antibody (Middle Region)[Go to Product page](#)

1 Image

Overview

Quantity:	100 µL
Target:	SLC25A24
Binding Specificity:	Middle Region
Reactivity:	Human, Mouse, Rat, Cow, Rabbit, Dog, Guinea Pig, Horse, Zebrafish (Danio rerio)
Host:	Rabbit
Clonality:	Polyclonal
Conjugate:	This SLC25A24 antibody is un-conjugated
Application:	Western Blotting (WB)

Product Details

Immunogen:	The immunogen is a synthetic peptide directed towards the middle region of human SLC25A24
Sequence:	FLFNPVTDIE EIIRFWKHST GIDIGDSLTI PDEFTEDKK SGQWWRQLLA
Predicted Reactivity:	Cow: 100%, Dog: 100%, Guinea Pig: 100%, Horse: 100%, Human: 100%, Mouse: 100%, Rabbit: 86%, Rat: 100%, Zebrafish: 77%
Characteristics:	This is a rabbit polyclonal antibody against SLC25A24. It was validated on Western Blot using a cell lysate as a positive control.
Purification:	Protein A purified

Target Details

Target:	SLC25A24
---------	----------

Target Details

Alternative Name:	SLC25A24 (SLC25A24 Products)
Background:	<p>SLC25A24 is a calcium-dependent mitochondrial solute carrier. Mitochondrial solute carriers shuttle metabolites, nucleotides, and cofactors through the mitochondrial inner membrane. It may act as a ATP-Mg/Pi exchanger that mediates the transport of Mg-ATP in exchange for phosphate, catalyzing the net uptake or efflux of adenine nucleotides into or from the mitochondria.</p> <p>Alias Symbols: RP11-356N1.3, APC1, DKFZp586G0123, SCAMC-1</p> <p>Protein Interaction Partner: UBC, MDM2, PARK2, FBXO6, FAF2, FLOT1, HNRNPM, MPV17, CD55, UBD,</p> <p>Protein Size: 411</p>
Molecular Weight:	45 kDa
Gene ID:	29957
NCBI Accession:	NM_013386
UniProt:	Q6NUK1

Application Details

Application Notes:	Optimal working dilutions should be determined experimentally by the investigator.
Comment:	Antigen size: 411 AA
Restrictions:	For Research Use only

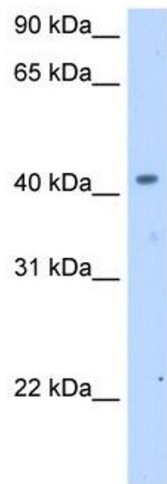
Handling

Format:	Liquid
Concentration:	Lot specific
Buffer:	Liquid. Purified antibody supplied in 1x PBS buffer with 0.09 % (w/v) sodium azide and 2 % sucrose.
Preservative:	Sodium azide
Precaution of Use:	This product contains Sodium azide: a POISONOUS AND HAZARDOUS SUBSTANCE which should be handled by trained staff only.
Handling Advice:	Avoid repeated freeze-thaw cycles.
Storage:	-20 °C

Handling

Storage Comment: For short term use, store at 2-8°C up to 1 week. For long term storage, store at -20°C in small aliquots to prevent freeze-thaw cycles.

Images



Western Blotting

Image 1. WB Suggested Anti-SLC25A24 Antibody Titration:
2.5ug/ml Positive Control: Human Thymus