

Datasheet for ABIN2781635
anti-SLC43A3 antibody (N-Term)[Go to Product page](#)

3 Images

Overview

Quantity:	100 µL
Target:	SLC43A3
Binding Specificity:	N-Term
Reactivity:	Human, Horse, Dog, Rabbit
Host:	Rabbit
Clonality:	Polyclonal
Conjugate:	This SLC43A3 antibody is un-conjugated
Application:	Immunohistochemistry (IHC), Western Blotting (WB)

Product Details

Immunogen:	The immunogen is a synthetic peptide directed towards the N terminal region of human SLC43A3
Sequence:	MAGQGLPLHV ATLLTGLLEC LGFAGVLFGW PSLVFVFKNE DYFKDLCGPD
Predicted Reactivity:	Dog: 92%, Horse: 86%, Human: 100%, Rabbit: 92%
Characteristics:	This is a rabbit polyclonal antibody against SLC43A3. It was validated on Western Blot and immunohistochemistry.
Purification:	Protein A purified

Target Details

Target:	SLC43A3
---------	---------

Target Details

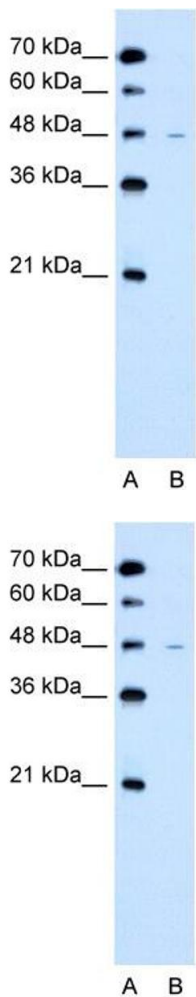
Alternative Name:	SLC43A3 (SLC43A3 Products)
Background:	SLC43A3 belongs to the SLC43A transporter family and is a putative transporter. Alias Symbols: DKFZp762A227, EEG1, FOAP-13, PRO1659, SEEEG-1 Protein Interaction Partner: UBC, LAMC3, Protein Size: 491
Molecular Weight:	54 kDa
Gene ID:	29015
NCBI Accession:	NM_017611 , NP_060081
UniProt:	Q8NBI5

Application Details

Application Notes:	Optimal working dilutions should be determined experimentally by the investigator.
Comment:	Antigen size: 491 AA
Restrictions:	For Research Use only

Handling

Format:	Liquid
Concentration:	Lot specific
Buffer:	Liquid. Purified antibody supplied in 1x PBS buffer with 0.09 % (w/v) sodium azide and 2 % sucrose.
Preservative:	Sodium azide
Precaution of Use:	This product contains Sodium azide: a POISONOUS AND HAZARDOUS SUBSTANCE which should be handled by trained staff only.
Handling Advice:	Avoid repeated freeze-thaw cycles.
Storage:	-20 °C
Storage Comment:	For short term use, store at 2-8°C up to 1 week. For long term storage, store at -20°C in small aliquots to prevent freeze-thaw cycles.

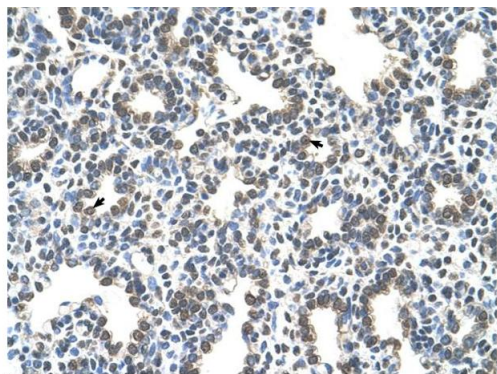


Western Blotting

Image 1. WB Suggested Anti-SLC43A3 Antibody Titration: 2.5ug/ml Positive Control: Jurkat cell lysate SLC43A3 is strongly supported by BioGPS gene expression data to be expressed in Human Jurkat cells

Western Blotting

Image 2. WB Suggested Anti-SLC43A3 Antibody Titration: 2.5 µg/mL Positive Control: Jurkat cell lysate SLC43A3 is strongly supported by BioGPS gene expression data to be expressed in Human Jurkat cells



Rabbit Anti-SLC43A3 Antibody
Catalog Number: ARP43938
Lot Number: QC14103
Paraffin Embedded Tissue: Human Lung
Cells with Positive label: Alveolar cells (Indicated with Arrows)
Antibody Concentration: 4.0-8.0 µg/ml
Magnification: 400X

Immunohistochemistry

Image 3. Human Lung