



[Go to Product page](#)

Datasheet for ABIN2781640

## anti-SLC7A11 antibody (Middle Region)

### 1 Image

#### Overview

Quantity:	100 µL
Target:	SLC7A11
Binding Specificity:	Middle Region
Reactivity:	Human, Mouse, Rat, Dog, Cow, Guinea Pig, Horse, Rabbit, Sheep
Host:	Rabbit
Clonality:	Polyclonal
Conjugate:	This SLC7A11 antibody is un-conjugated
Application:	Western Blotting (WB)

#### Product Details

Immunogen:	The immunogen is a synthetic peptide directed towards the middle region of human SLC7A11
Sequence:	KGQTQNFKDA FSGRDSSITR LPLAFYYGMY AYAGWFYLN FVTEEEVENPEK
Predicted Reactivity:	Cow: 92%, Dog: 92%, Guinea Pig: 92%, Horse: 92%, Human: 100%, Mouse: 85%, Rabbit: 92%, Rat: 85%, Sheep: 92%
Characteristics:	This is a rabbit polyclonal antibody against SLC7A11. It was validated on Western Blot using a cell lysate as a positive control.
Purification:	Affinity Purified

#### Target Details

Target:	SLC7A11
---------	---------

## Target Details

---

Alternative Name:	SLC7A11 ( <a href="#">SLC7A11 Products</a> )
Background:	<p>SLC7A11 is a member of a heteromeric Na(+)-independent anionic amino acid transport system highly specific for cystine and glutamate. In this system, designated system Xc(-), the anionic form of cystine is transported in exchange for glutamate.</p> <p>Alias Symbols: CCBR1, xCT</p> <p>Protein Interaction Partner: UBC, TERT, BAAT, SLC3A2,</p> <p>Protein Size: 501</p>
Molecular Weight:	55 kDa
Gene ID:	23657
NCBI Accession:	<a href="#">NM_014331</a> , <a href="#">NP_055146</a>
UniProt:	<a href="#">Q9UPY5</a>

## Application Details

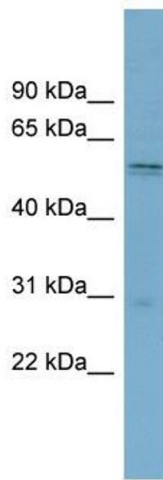
---

Application Notes:	Optimal working dilutions should be determined experimentally by the investigator.
Comment:	Antigen size: 501 AA
Restrictions:	For Research Use only

## Handling

---

Format:	Liquid
Concentration:	Lot specific
Buffer:	Liquid. Purified antibody supplied in 1x PBS buffer with 0.09 % (w/v) sodium azide and 2 % sucrose.
Preservative:	Sodium azide
Precaution of Use:	This product contains Sodium azide: a POISONOUS AND HAZARDOUS SUBSTANCE which should be handled by trained staff only.
Handling Advice:	Avoid repeated freeze-thaw cycles.
Storage:	-20 °C
Storage Comment:	For short term use, store at 2-8°C up to 1 week. For long term storage, store at -20°C in small aliquots to prevent freeze-thaw cycles.



### Western Blotting

**Image 1.** WB Suggested Anti-SLC7A11 Antibody Titration:  
0.2-1 ug/ml ELISA Titer: 1:312500 Positive Control: THP-1  
cell lysate