



[Go to Product page](#)

Datasheet for ABIN2781642

anti-SLC2A8 antibody (Middle Region)

3 Images

Overview

Quantity:	100 µL
Target:	SLC2A8
Binding Specificity:	Middle Region
Reactivity:	Human, Rabbit
Host:	Rabbit
Clonality:	Polyclonal
Conjugate:	This SLC2A8 antibody is un-conjugated
Application:	Western Blotting (WB)

Product Details

Immunogen:	The immunogen is a synthetic peptide directed towards the middle region of human SLC2A8
Sequence:	VLSGVMMVFS TSAFGAYFKL TQGGPGNSSH VAISAPVSAQ PVDASVGLAW
Predicted Reactivity:	Human: 100%, Rabbit: 100%
Characteristics:	This is a rabbit polyclonal antibody against SLC2A8. It was validated on Western Blot using a cell lysate as a positive control.
Purification:	Affinity Purified

Target Details

Target:	SLC2A8
Alternative Name:	SLC2A8 (SLC2A8 Products)

Target Details

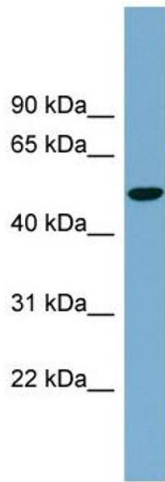
Background:	SLC2A8 is the insulin-regulated facilitative glucose transporter.SLC2A8 binds cytochalasin B in a glucose-inhibitable manner.SLC2A8 seems to be a dual-specific sugar transporter as it is inhibitable by fructose. Alias Symbols: GLUT8, GLUTX1 Protein Interaction Partner: UBC, Protein Size: 477
Molecular Weight:	51 kDa
Gene ID:	29988
NCBI Accession:	NM_014580 , NP_055395
UniProt:	Q9NY64

Application Details

Application Notes:	Optimal working dilutions should be determined experimentally by the investigator.
Comment:	Antigen size: 477 AA
Restrictions:	For Research Use only

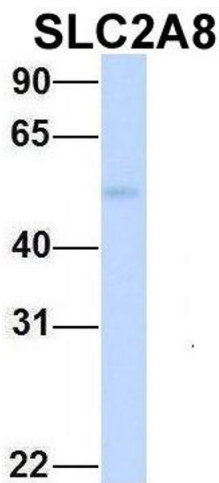
Handling

Format:	Liquid
Concentration:	Lot specific
Buffer:	Liquid. Purified antibody supplied in 1x PBS buffer with 0.09 % (w/v) sodium azide and 2 % sucrose.
Preservative:	Sodium azide
Precaution of Use:	This product contains Sodium azide: a POISONOUS AND HAZARDOUS SUBSTANCE which should be handled by trained staff only.
Handling Advice:	Avoid repeated freeze-thaw cycles.
Storage:	-20 °C
Storage Comment:	For short term use, store at 2-8°C up to 1 week. For long term storage, store at -20°C in small aliquots to prevent freeze-thaw cycles.



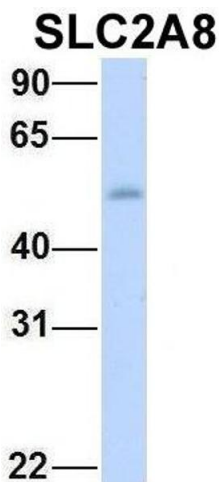
Western Blotting

Image 1. WB Suggested Anti-SLC2A8 Antibody Titration:
0.2-1 ug/ml Positive Control: NCI-H226 cell lysate



Western Blotting

Image 2. Host: Rabbit Target Name: SLC2A8 Sample Type:
Human Fetal Liver Antibody Dilution: 1.0ug/ml



Western Blotting

Image 3. Host: Rabbit Target Name: SLC2A8 Sample Type:
Human Fetal Heart Antibody Dilution: 1.0ug/ml