

Datasheet for ABIN2781643

anti-SLC40A1 antibody (Middle Region)**2** Images[Go to Product page](#)

Overview

Quantity:	100 µL
Target:	SLC40A1
Binding Specificity:	Middle Region
Reactivity:	Human, Mouse, Rat, Dog, Pig, Rabbit, Cow, Horse
Host:	Rabbit
Clonality:	Polyclonal
Conjugate:	This SLC40A1 antibody is un-conjugated
Application:	Western Blotting (WB), Immunohistochemistry (IHC)

Product Details

Immunogen:	The immunogen is a synthetic peptide directed towards the middle region of human SLC40A1
Sequence:	GSPLDLSVSP FEDIRSRFIQ GESITPTKIP EITTEIYMSN GSNSANIVPE
Predicted Reactivity:	Cow: 93%, Dog: 100%, Horse: 100%, Human: 100%, Mouse: 100%, Pig: 86%, Rabbit: 100%, Rat: 100%
Characteristics:	This is a rabbit polyclonal antibody against SLC40A1. It was validated on Western Blot.
Purification:	Affinity Purified

Target Details

Target:	SLC40A1
Alternative Name:	SLC40A1 (SLC40A1 Products)

Target Details

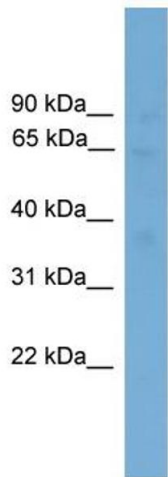
Background:	<p>The protein encoded by this gene is a cell membrane protein that may be involved in iron export from duodenal epithelial cells. Defects in this gene are a cause of hemochromatosis type 4 (HFE4).</p> <p>Alias Symbols: FPN1, HFE4, IREG1, MST079, MSTP079, MTP1, SLC11A3</p> <p>Protein Interaction Partner: UBC, GOLM1, HAMP,</p> <p>Protein Size: 571</p>
Molecular Weight:	62 kDa
Gene ID:	30061
NCBI Accession:	NM_014585 , NP_055400
UniProt:	Q9NP59
Pathways:	Transition Metal Ion Homeostasis

Application Details

Application Notes:	Optimal working dilutions should be determined experimentally by the investigator.
Comment:	Antigen size: 571 AA
Restrictions:	For Research Use only

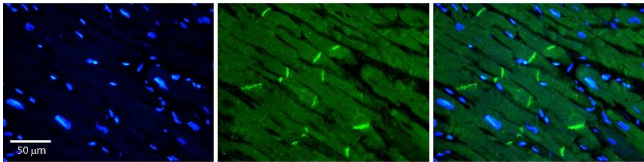
Handling

Format:	Liquid
Concentration:	Lot specific
Buffer:	Liquid. Purified antibody supplied in 1x PBS buffer with 0.09 % (w/v) sodium azide and 2 % sucrose.
Preservative:	Sodium azide
Precaution of Use:	This product contains Sodium azide: a POISONOUS AND HAZARDOUS SUBSTANCE which should be handled by trained staff only.
Handling Advice:	Avoid repeated freeze-thaw cycles.
Storage:	-20 °C
Storage Comment:	For short term use, store at 2-8°C up to 1 week. For long term storage, store at -20°C in small aliquots to prevent freeze-thaw cycles.



Western Blotting

Image 1. WB Suggested Anti-SLC40A1 Antibody Titration: 0.2-1 ug/ml ELISA Titer: 1:312500 Positive Control: HepG2 cell lysate



Immunohistochemistry

Image 2. Rabbit Anti-SLC40A1 Antibody Formalin Fixed Paraffin Embedded Tissue: Human heart Tissue Observed Staining: Plasma membrane in intercalated disk Primary Antibody Concentration: 1:100 Other Working Concentrations: N/A Secondary Antibody: Donkey anti-Rabbit-Cy3 Secondary Antibody Concentration: 1:200 Magnification: 20X Exposure Time: 0.5 - 2.0 sec