

Datasheet for ABIN2781644  
**anti-NHE8 antibody (N-Term)**[Go to Product page](#)

## 1 Image

## Overview

Quantity:	100 µL
Target:	NHE8 (SLC9A8)
Binding Specificity:	N-Term
Reactivity:	Human, Mouse, Rat, Dog, Guinea Pig, Horse, Rabbit, Cow, Zebrafish (Danio rerio), Saccharomyces cerevisiae
Host:	Rabbit
Clonality:	Polyclonal
Conjugate:	This NHE8 antibody is un-conjugated
Application:	Western Blotting (WB)

## Product Details

Immunogen:	The immunogen is a synthetic peptide directed towards the N-terminal region of Rat Slc9a8
Sequence:	LHKGNFFQNI GSITLFAVFG TAISAFVVGG GIYFLGQADV ISKLNMTDSF
Predicted Reactivity:	Cow: 100%, Dog: 100%, Guinea Pig: 100%, Horse: 100%, Human: 100%, Mouse: 100%, Rabbit: 100%, Rat: 100%, Yeast: 77%, Zebrafish: 100%
Characteristics:	This is a rabbit polyclonal antibody against Slc9a8. It was validated on Western Blot.
Purification:	Affinity Purified

## Target Details

Target:	NHE8 (SLC9A8)
---------	---------------

## Target Details

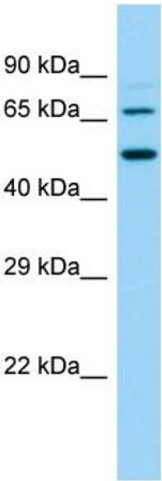
Alternative Name:	Slc9a8 ( <a href="#">SLC9A8 Products</a> )
Background:	<p>Slc9a8 is involved in pH regulation to eliminate acids generated by active metabolism or to counter adverse environmental conditions. It is a major proton extruding system driven by the inward sodium ion chemical gradient and plays an important role in signal transduction.</p> <p>Alias Symbols: -</p> <p>Protein Size: 575</p>
Molecular Weight:	63 kDa
Gene ID:	311651
NCBI Accession:	<a href="#">NM_001025281</a> , <a href="#">NP_001020452</a>
UniProt:	<a href="#">Q4L208</a>
Pathways:	<a href="#">Proton Transport</a>

## Application Details

Application Notes:	Optimal working dilutions should be determined experimentally by the investigator.
Comment:	Antigen size: 575 AA
Restrictions:	For Research Use only

## Handling

Format:	Liquid
Concentration:	Lot specific
Buffer:	Liquid. Purified antibody supplied in 1x PBS buffer with 0.09 % (w/v) sodium azide and 2 % sucrose.
Preservative:	Sodium azide
Precaution of Use:	This product contains Sodium azide: a POISONOUS AND HAZARDOUS SUBSTANCE which should be handled by trained staff only.
Handling Advice:	Avoid repeated freeze-thaw cycles.
Storage:	-20 °C
Storage Comment:	For short term use, store at 2-8°C up to 1 week. For long term storage, store at -20°C in small aliquots to prevent freeze-thaw cycles.



Western Blotting

**Image 1.** Host: Rabbit Target Name: Slc9a8 Sample Type: Rat Small Intestine lysates Antibody Dilution: 1.0ug/ml