



[Go to Product page](#)

Datasheet for ABIN2781645
anti-NHE8 antibody (Middle Region)

1 Image

Overview

Quantity:	100 µL
Target:	NHE8 (SLC9A8)
Binding Specificity:	Middle Region
Reactivity:	Human, Mouse, Rat, Dog, Guinea Pig, Horse, Rabbit, Cow, Zebrafish (Danio rerio)
Host:	Rabbit
Clonality:	Polyclonal
Conjugate:	This NHE8 antibody is un-conjugated
Application:	Western Blotting (WB)

Product Details

Immunogen:	The immunogen is a synthetic peptide directed towards the middle region of human SLC9A8
Sequence:	AKYLNPFTR RLTQEDLHHG RIQMKTLTNK WYEEVRQGPS GSEDDEQELL
Predicted Reactivity:	Cow: 93%, Dog: 100%, Guinea Pig: 100%, Horse: 100%, Human: 100%, Mouse: 100%, Rabbit: 100%, Rat: 100%, Zebrafish: 93%
Characteristics:	This is a rabbit polyclonal antibody against SLC9A8. It was validated on Western Blot using a cell lysate as a positive control.
Purification:	Affinity Purified

Target Details

Target:	NHE8 (SLC9A8)
---------	---------------

Target Details

Alternative Name:	SLC9A8 (SLC9A8 Products)
Background:	<p>Sodium-hydrogen exchangers (NHEs), such as SLC9A8, are integral transmembrane proteins that exchange extracellular Na⁺ for intracellular H⁺. NHEs have multiple functions, including intracellular pH homeostasis, cell volume regulation, and electroneutral NaCl absorption in epithelia.</p> <p>Alias Symbols: DKFZp686C03237, FLJ42500, KIAA0939, MGC138418, NHE8</p> <p>Protein Interaction Partner: ALB,</p> <p>Protein Size: 581</p>
Molecular Weight:	65 kDa
Gene ID:	23315
NCBI Accession:	NM_015266 , NP_056081
UniProt:	Q2M1U9
Pathways:	Proton Transport

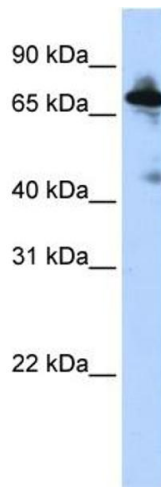
Application Details

Application Notes:	Optimal working dilutions should be determined experimentally by the investigator.
Comment:	Antigen size: 581 AA
Restrictions:	For Research Use only

Handling

Format:	Liquid
Concentration:	Lot specific
Buffer:	Liquid. Purified antibody supplied in 1x PBS buffer with 0.09 % (w/v) sodium azide and 2 % sucrose.
Preservative:	Sodium azide
Precaution of Use:	This product contains Sodium azide: a POISONOUS AND HAZARDOUS SUBSTANCE which should be handled by trained staff only.
Handling Advice:	Avoid repeated freeze-thaw cycles.
Storage:	-20 °C
Storage Comment:	For short term use, store at 2-8°C up to 1 week. For long term storage, store at -20°C in small

aliquots to prevent freeze-thaw cycles.



Western Blotting

Image 1. WB Suggested Anti-SLC9A8 Antibody Titration:
0.2-1 ug/ml ELISA Titer: 1:312500 Positive Control: HepG2
cell lysate