

Datasheet for ABIN2781646
anti-SLC35C2 antibody (C-Term)[Go to Product page](#)

1 Image

Overview

Quantity:	100 µL
Target:	SLC35C2 (OVCOV1)
Binding Specificity:	C-Term
Reactivity:	Human, Mouse, Rabbit, Rat, Cow, Saccharomyces cerevisiae, Dog, Guinea Pig, Horse, Zebrafish (Danio rerio)
Host:	Rabbit
Clonality:	Polyclonal
Conjugate:	This SLC35C2 antibody is un-conjugated
Application:	Western Blotting (WB)

Product Details

Immunogen:	The immunogen is a synthetic peptide directed towards the C-terminal region of mouse SLC35C2
Sequence:	QDTGLLLWVL GSLLLGGILA FGLGFSEFLL VSRTSSLTLS IAGIFKEVCT
Predicted Reactivity:	Cow: 100%, Dog: 100%, Guinea Pig: 100%, Horse: 100%, Human: 100%, Mouse: 100%, Rabbit: 100%, Rat: 100%, Yeast: 100%, Zebrafish: 100%
Characteristics:	This is a rabbit polyclonal antibody against Slc35c2. It was validated on Western Blot.
Purification:	Affinity Purified

Target Details

Target:	SLC35C2 (OVCOV1)
---------	------------------

Target Details

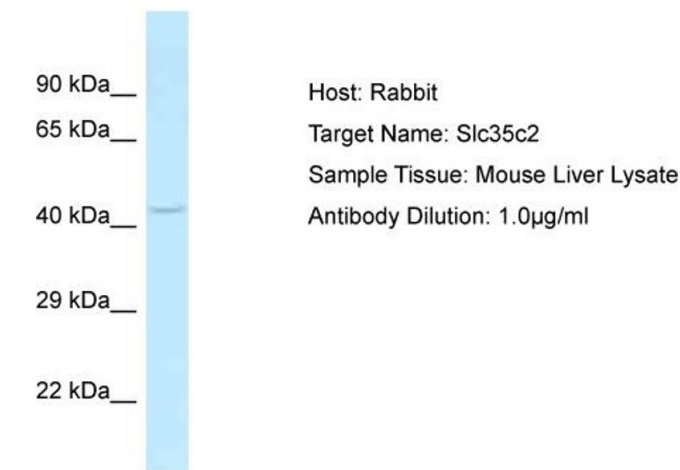
Alternative Name:	Slc35c2 (OVCOV1 Products)
Background:	<p>This gene encodes a member of the triose-phosphate transporter protein family. This gene is regulated by oxygen tension, is induced in hypoxic trophoblast cells, and is overexpressed in ovarian cancer. Alternative splicing results in multiple transcript variants. A pseudogene of this gene has been defined on the X chromosome.</p> <p>Alias Symbols: CGI-15, OVCOV1, C20orf5, BA39402.1</p> <p>Protein Size: 364</p>
Molecular Weight:	40 kDa
Gene ID:	51006
NCBI Accession:	NM_001281457 , NP_001268386
UniProt:	Q9NQQ7

Application Details

Application Notes:	Optimal working dilution should be determined by the investigator.
Restrictions:	For Research Use only

Handling

Format:	Liquid
Concentration:	1 mg/mL
Buffer:	Liquid. Purified antibody supplied in 1x PBS buffer with 0.09 % (w/v) sodium azide and 2 % sucrose.
Preservative:	Sodium azide
Precaution of Use:	This product contains Sodium azide: a POISONOUS AND HAZARDOUS SUBSTANCE which should be handled by trained staff only.
Handling Advice:	Avoid repeat freeze-thaw cycles.
Storage:	-20 °C
Storage Comment:	For short term use, store at 2-8°C up to 1 week. For long term storage, store at -20°C in small aliquots to prevent freeze-thaw cycles.



Western Blotting

Image 1. Host: Rabbit Target Name: SLC35C2 Sample Tissue: Mouse Liver Antibody Dilution: 1ug/ml