



[Go to Product page](#)

Datasheet for ABIN2781650  
**anti-SLC01C1 antibody (N-Term)**

1 Image

### Overview

Quantity:	100 µL
Target:	SLC01C1
Binding Specificity:	N-Term
Reactivity:	Human, Mouse, Rat, Rabbit, Dog, Guinea Pig, Horse, Cow, Saccharomyces cerevisiae
Host:	Rabbit
Clonality:	Polyclonal
Conjugate:	This SLC01C1 antibody is un-conjugated
Application:	Western Blotting (WB)

### Product Details

Immunogen:	The immunogen is a synthetic peptide directed towards the N terminal region of human SLC01C1
Sequence:	VDTSSSMWIY VFLGNLLRGI GETPIQPLGI AYLDFFASED NAAFYIGCVQ
Predicted Reactivity:	Cow: 93%, Dog: 100%, Guinea Pig: 100%, Horse: 100%, Human: 100%, Mouse: 100%, Rabbit: 100%, Rat: 100%, Yeast: 83%
Characteristics:	This is a rabbit polyclonal antibody against SLC01C1. It was validated on Western Blot using a cell lysate as a positive control.
Purification:	Affinity Purified

### Target Details

Target:	SLC01C1
---------	---------

## Target Details

---

Alternative Name:	SLC01C1 ( <a href="#">SLC01C1 Products</a> )
Background:	<p>SLC01C1 is a member of the organic anion transporter family. SLC01C1 is a transmembrane receptor that mediates the sodium-independent uptake of thyroid hormones in brain tissues. This protein has particularly high affinity for the thyroid hormones thyroxine, tri-iodothyronine and reverse tri-iodothyronine. Polymorphisms in the gene encoding this protein may be associated with fatigue and depression in patients suffering from hyperthyroidism.</p> <p>Alias Symbols: OATP-F, OATP1, OATP1C1, SLC21A14, OATPF, OATP14, OATPRP5</p> <p>Protein Interaction Partner: UBC, PDZD3,</p> <p>Protein Size: 712</p>
Molecular Weight:	79 kDa
Gene ID:	53919
NCBI Accession:	<a href="#">NM_017435</a> , <a href="#">NP_059131</a>
UniProt:	<a href="#">Q9NYB5</a>

## Application Details

---

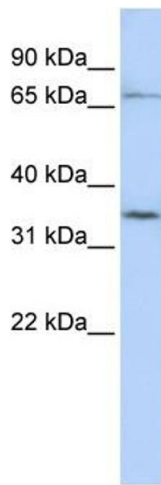
Application Notes:	Optimal working dilutions should be determined experimentally by the investigator.
Comment:	Antigen size: 712 AA
Restrictions:	For Research Use only

## Handling

---

Format:	Liquid
Concentration:	Lot specific
Buffer:	Liquid. Purified antibody supplied in 1x PBS buffer with 0.09 % (w/v) sodium azide and 2 % sucrose.
Preservative:	Sodium azide
Precaution of Use:	This product contains Sodium azide: a POISONOUS AND HAZARDOUS SUBSTANCE which should be handled by trained staff only.
Handling Advice:	Avoid repeated freeze-thaw cycles.
Storage:	-20 °C
Storage Comment:	For short term use, store at 2-8°C up to 1 week. For long term storage, store at -20°C in small

aliquots to prevent freeze-thaw cycles.



#### Western Blotting

**Image 1.** WB Suggested Anti-SLC01C1 Antibody Titration:  
0.2-1  $\mu$ g/ml ELISA Titer: 1:312500 Positive Control: Jurkat  
cell lysate