

Datasheet for ABIN2781651
anti-SLC35F2 antibody (N-Term)

3 Images

[Go to Product page](#)

Overview

Quantity:	100 µL
Target:	SLC35F2
Binding Specificity:	N-Term
Reactivity:	Human
Host:	Rabbit
Clonality:	Polyclonal
Conjugate:	This SLC35F2 antibody is un-conjugated
Application:	Western Blotting (WB), Immunohistochemistry (IHC)

Product Details

Immunogen:	The immunogen is a synthetic peptide directed towards the N terminal region of human SLC35F2
Sequence:	MEADSPAGPG APEPLAEGAA AEFSSLLRRI KGKLFTWNIL KTIALGQMLS
Predicted Reactivity:	Human: 100%
Characteristics:	This is a rabbit polyclonal antibody against SLC35F2. It was validated on Western Blot and immunohistochemistry.
Purification:	Protein A purified

Target Details

Target:	SLC35F2
---------	---------

Target Details

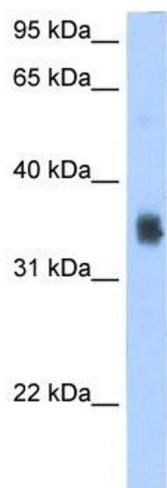
Alternative Name:	SLC35F2 (SLC35F2 Products)
Background:	SLC35F2 is a putative solute transporter. Alias Symbols: DKFZp667H1615, FLJ13018, HSN0V1 Protein Interaction Partner: UBC, ELAVL1, Protein Size: 374
Molecular Weight:	41 kDa
Gene ID:	54733
NCBI Accession:	NM_017515 , NP_059985
UniProt:	Q8IXU6

Application Details

Application Notes:	Optimal working dilutions should be determined experimentally by the investigator.
Comment:	Antigen size: 374 AA
Restrictions:	For Research Use only

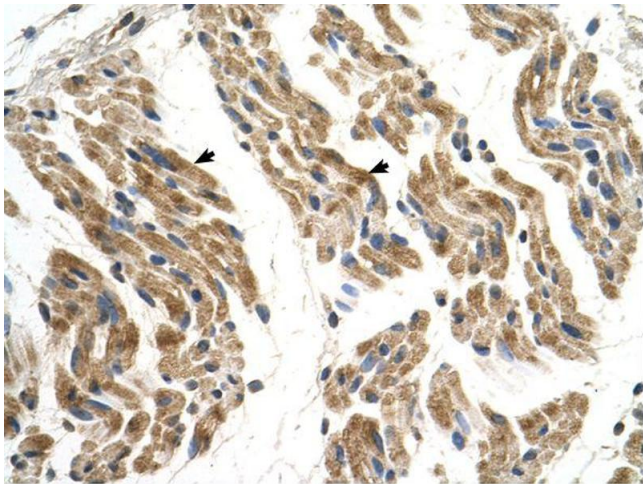
Handling

Format:	Liquid
Concentration:	Lot specific
Buffer:	Liquid. Purified antibody supplied in 1x PBS buffer with 0.09 % (w/v) sodium azide and 2 % sucrose.
Preservative:	Sodium azide
Precaution of Use:	This product contains Sodium azide: a POISONOUS AND HAZARDOUS SUBSTANCE which should be handled by trained staff only.
Handling Advice:	Avoid repeated freeze-thaw cycles.
Storage:	-20 °C
Storage Comment:	For short term use, store at 2-8°C up to 1 week. For long term storage, store at -20°C in small aliquots to prevent freeze-thaw cycles.



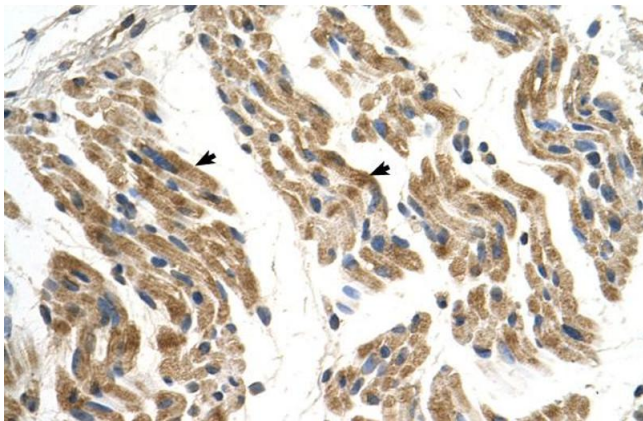
Western Blotting

Image 1. WB Suggested Antibody Titration: 2.5 ug/ml
Positive Control: 293T



Immunohistochemistry

Image 2.



Immunohistochemistry

Image 3. Human Muscle