



[Go to Product page](#)

Datasheet for ABIN2781657

anti-SLC35A5 antibody (N-Term)

2 Images

Overview

Quantity:	100 µL
Target:	SLC35A5
Binding Specificity:	N-Term
Reactivity:	Human, Mouse, Rat, Cow, Dog, Guinea Pig, Horse, Rabbit, Zebrafish (Danio rerio)
Host:	Rabbit
Clonality:	Polyclonal
Conjugate:	This SLC35A5 antibody is un-conjugated
Application:	Western Blotting (WB), Immunohistochemistry (IHC)

Product Details

Immunogen:	The immunogen is a synthetic peptide directed towards the N terminal region of human SLC35A5
Sequence:	LVKYSANEEN KYDYLPTTVN VCSELVKLVF CVLVSFCEVIK KDHQSRNLKY
Predicted Reactivity:	Cow: 100%, Dog: 100%, Guinea Pig: 100%, Horse: 100%, Human: 100%, Mouse: 100%, Rabbit: 93%, Rat: 100%, Zebrafish: 85%
Characteristics:	This is a rabbit polyclonal antibody against SLC35A5. It was validated on Western Blot using a cell lysate as a positive control.
Purification:	Affinity Purified

Target Details

Target:	SLC35A5
---------	---------

Target Details

Alternative Name:	SLC35A5 (SLC35A5 Products)
Background:	<p>SLC35A5 belongs to the nucleotide-sugar transporter family, SLC35A subfamily. It is a multi-pass membrane protein. The function of the SLC35A5 protein remains unknown.</p> <p>Alias Symbols: DKFZp434E102, FLJ11130, FLJ20730, FLJ25973</p> <p>Protein Interaction Partner: UBC,</p> <p>Protein Size: 424</p>
Molecular Weight:	48 kDa
Gene ID:	55032
NCBI Accession:	NM_017945 , NP_060415
UniProt:	Q9BS91

Application Details

Application Notes:	Optimal working dilutions should be determined experimentally by the investigator.
Comment:	Antigen size: 424 AA
Restrictions:	For Research Use only

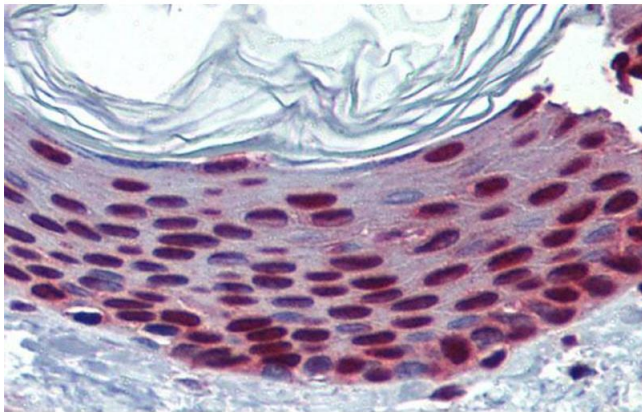
Handling

Format:	Liquid
Concentration:	Lot specific
Buffer:	Liquid. Purified antibody supplied in 1x PBS buffer with 0.09 % (w/v) sodium azide and 2 % sucrose.
Preservative:	Sodium azide
Precaution of Use:	This product contains Sodium azide: a POISONOUS AND HAZARDOUS SUBSTANCE which should be handled by trained staff only.
Handling Advice:	Avoid repeated freeze-thaw cycles.
Storage:	-20 °C
Storage Comment:	For short term use, store at 2-8°C up to 1 week. For long term storage, store at -20°C in small aliquots to prevent freeze-thaw cycles.



Western Blotting

Image 1. WB Suggested Anti-SLC35A5 Antibody Titration: 0.2-1 ug/ml ELISA Titer: 1:62500 Positive Control: Human Muscle



Immunohistochemistry

Image 2. Immunohistochemistry with Human Skin lysate tissue at an antibody concentration of 5.0ug/ml using anti-SLC35A5 antibody