

Datasheet for ABIN2781660
anti-SLC39A9 antibody (Middle Region)[Go to Product page](#)

1 Image

Overview

Quantity:	100 µL
Target:	SLC39A9
Binding Specificity:	Middle Region
Reactivity:	Human, Rat, Cow, Dog, Guinea Pig, Pig, Rabbit, Horse
Host:	Rabbit
Clonality:	Polyclonal
Conjugate:	This SLC39A9 antibody is un-conjugated
Application:	Western Blotting (WB)

Product Details

Immunogen:	The immunogen is a synthetic peptide directed towards the middle region of human SLC39A9
Sequence:	YIGVSLVLGF VFMLLVDDQIG NSHVHSTDDP EAARSSNSKI TTTLGLVVHA
Predicted Reactivity:	Cow: 86%, Dog: 86%, Guinea Pig: 79%, Horse: 86%, Human: 100%, Pig: 86%, Rabbit: 79%, Rat: 83%
Characteristics:	This is a rabbit polyclonal antibody against SLC39A9. It was validated on Western Blot using a cell lysate as a positive control.
Purification:	Affinity Purified

Target Details

Target:	SLC39A9
---------	---------

Target Details

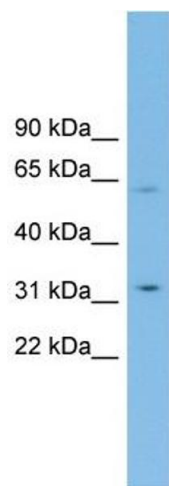
Alternative Name:	SLC39A9 (SLC39A9 Products)
Background:	SLC39A9 may act as a zinc-influx transporter. Alias Symbols: FLJ11274, MGC74989, ZIP9, ZIP-9 Protein Size: 307
Molecular Weight:	32 kDa
Gene ID:	55334
NCBI Accession:	NM_018375 , NP_060845
UniProt:	Q9NUM3

Application Details

Application Notes:	Optimal working dilutions should be determined experimentally by the investigator.
Comment:	Antigen size: 307 AA
Restrictions:	For Research Use only

Handling

Format:	Liquid
Concentration:	Lot specific
Buffer:	Liquid. Purified antibody supplied in 1x PBS buffer with 0.09 % (w/v) sodium azide and 2 % sucrose.
Preservative:	Sodium azide
Precaution of Use:	This product contains Sodium azide: a POISONOUS AND HAZARDOUS SUBSTANCE which should be handled by trained staff only.
Handling Advice:	Avoid repeated freeze-thaw cycles.
Storage:	-20 °C
Storage Comment:	For short term use, store at 2-8°C up to 1 week. For long term storage, store at -20°C in small aliquots to prevent freeze-thaw cycles.



Western Blotting

Image 1. WB Suggested Anti-SLC39A9 Antibody Titration:
0.2-1 ug/ml ELISA Titer: 1:312500 Positive Control: U937
cell lysate