



[Go to Product page](#)

Datasheet for ABIN2781661
anti-SLC35C1 antibody (N-Term)

1 Image

Overview

Quantity:	100 µL
Target:	SLC35C1
Binding Specificity:	N-Term
Reactivity:	Human, Rabbit, Rat, Horse, Cow, Dog, Guinea Pig, Mouse, Pig
Host:	Rabbit
Clonality:	Polyclonal
Conjugate:	This SLC35C1 antibody is un-conjugated
Application:	Western Blotting (WB)

Product Details

Immunogen:	The immunogen is a synthetic peptide directed towards the N terminal region of human SLC35C1
Sequence:	TSISMVFLNK YLLDSPSLRL DTPIFVTFYQ CLVTTLLCKG LSALAACCPG
Predicted Reactivity:	Cow: 100%, Dog: 93%, Guinea Pig: 92%, Horse: 93%, Human: 100%, Mouse: 93%, Pig: 93%, Rabbit: 100%, Rat: 93%
Characteristics:	This is a rabbit polyclonal antibody against SLC35C1. It was validated on Western Blot using a cell lysate as a positive control.
Purification:	Protein A purified

Target Details

Target:	SLC35C1
---------	---------

Target Details

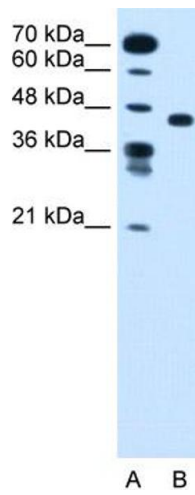
Alternative Name:	SLC35C1 (SLC35C1 Products)
Background:	SLC35C1 is involved in GDP-fucose import from the cytoplasm into the Golgi lumen. Alias Symbols: FLJ11320, FLJ14841, FUCT1, CDG2C Protein Size: 364
Molecular Weight:	40 kDa
Gene ID:	55343
NCBI Accession:	NM_018389 , NP_060859
UniProt:	Q96A29

Application Details

Application Notes:	Optimal working dilutions should be determined experimentally by the investigator.
Comment:	Antigen size: 364 AA
Restrictions:	For Research Use only

Handling

Format:	Liquid
Concentration:	Lot specific
Buffer:	Liquid. Purified antibody supplied in 1x PBS buffer with 0.09 % (w/v) sodium azide and 2 % sucrose.
Preservative:	Sodium azide
Precaution of Use:	This product contains Sodium azide: a POISONOUS AND HAZARDOUS SUBSTANCE which should be handled by trained staff only.
Handling Advice:	Avoid repeated freeze-thaw cycles.
Storage:	-20 °C
Storage Comment:	For short term use, store at 2-8°C up to 1 week. For long term storage, store at -20°C in small aliquots to prevent freeze-thaw cycles.



Western Blotting

Image 1. WB Suggested Anti-SLC35C1 Antibody Titration:

1.25ug/ml Positive Control: Jurkat cell lysate