

Datasheet for ABIN2781662
anti-SLC22A15 antibody (Middle Region)[Go to Product page](#)

1 Image

Overview

Quantity:	100 µL
Target:	SLC22A15
Binding Specificity:	Middle Region
Reactivity:	Human, Mouse, Cow, Dog, Rabbit, Rat, Horse, Guinea Pig
Host:	Rabbit
Clonality:	Polyclonal
Conjugate:	This SLC22A15 antibody is un-conjugated
Application:	Western Blotting (WB)

Product Details

Immunogen:	The immunogen is a synthetic peptide directed towards the middle region of human SLC22A15
Sequence:	NQKWFGKRKT LSAFLCLGGL ACLIVMFLPE KKDTGVFAVV NSHSLSLLGK
Predicted Reactivity:	Cow: 100%, Dog: 100%, Guinea Pig: 100%, Horse: 100%, Human: 100%, Mouse: 100%, Rabbit: 100%, Rat: 100%
Characteristics:	This is a rabbit polyclonal antibody against SLC22A15. It was validated on Western Blot using a cell lysate as a positive control.
Purification:	Affinity Purified

Target Details

Target:	SLC22A15
---------	----------

Target Details

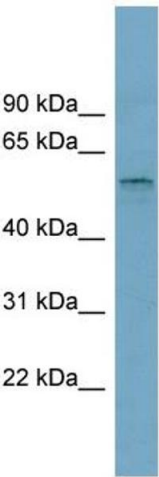
Alternative Name:	SLC22A15 (SLC22A15 Products)
Background:	<p>Organic ion transporters, such as SLC22A15, transport various medically and physiologically important compounds, including pharmaceuticals, toxins, hormones, neurotransmitters, and cellular metabolites. These transporters are also referred to as amphiphil</p> <p>Alias Symbols: DKFZp761G0313, FLIPT1, PRO34686</p> <p>Protein Size: 535</p>
Molecular Weight:	59 kDa
Gene ID:	55356
NCBI Accession:	NM_018420 , NP_060890
UniProt:	Q8IZD6

Application Details

Application Notes:	Optimal working dilutions should be determined experimentally by the investigator.
Comment:	Antigen size: 535 AA
Restrictions:	For Research Use only

Handling

Format:	Liquid
Concentration:	Lot specific
Buffer:	Liquid. Purified antibody supplied in 1x PBS buffer with 0.09 % (w/v) sodium azide and 2 % sucrose.
Preservative:	Sodium azide
Precaution of Use:	This product contains Sodium azide: a POISONOUS AND HAZARDOUS SUBSTANCE which should be handled by trained staff only.
Handling Advice:	Avoid repeated freeze-thaw cycles.
Storage:	-20 °C
Storage Comment:	For short term use, store at 2-8°C up to 1 week. For long term storage, store at -20°C in small aliquots to prevent freeze-thaw cycles.



Western Blotting

Image 1. WB Suggested Anti-SLC22A15 Antibody Titration:
0.2-1 ug/ml Positive Control: OVCAR-3 cell lysate