

Datasheet for ABIN2781664
anti-SLC22A11 antibody (C-Term)

3 Images

1 Publication

[Go to Product page](#)

Overview

Quantity:	100 µL
Target:	SLC22A11
Binding Specificity:	C-Term
Reactivity:	Human, Dog
Host:	Rabbit
Clonality:	Polyclonal
Conjugate:	This SLC22A11 antibody is un-conjugated
Application:	Western Blotting (WB)

Product Details

Immunogen:	The immunogen is a synthetic peptide directed towards the C terminal region of human SLC22A11
Sequence:	ASSLVLFFL PETQGLPLPD TIQDLESQKS TAAQGNRQEA VTVESTSL
Predicted Reactivity:	Dog: 79%, Human: 100%
Characteristics:	This is a rabbit polyclonal antibody against SLC22A11. It was validated on Western Blot using a cell lysate as a positive control.
Purification:	Affinity Purified

Target Details

Target:	SLC22A11
---------	----------

Target Details

Alternative Name:	SLC22A11 (SLC22A11 Products)
Background:	<p>SLC22A11 is involved in the sodium-independent transport and excretion of organic anions, some of which are potentially toxic. SLC22A11 is an integral membrane protein and is found mainly in the kidney and in the placenta, where it may act to prevent potentially harmful organic anions from reaching the fetus. The protein encoded by this gene is involved in the sodium-independent transport and excretion of organic anions, some of which are potentially toxic. The encoded protein is an integral membrane protein and is found mainly in the kidney and in the placenta, where it may act to prevent potentially harmful organic anions from reaching the fetus. Publication Note: This RefSeq record includes a subset of the publications that are available for this gene. Please see the Entrez Gene record to access additional publications.</p> <p>Alias Symbols: MGC34282, OAT4, hOAT4</p> <p>Protein Interaction Partner: FUS, SLC9A3R1, PDZK1, CAV3, RRP1B,</p> <p>Protein Size: 550</p>
Molecular Weight:	60 kDa
Gene ID:	55867
NCBI Accession:	NM_018484 , NP_060954
UniProt:	Q9NSA0

Application Details

Application Notes:	Optimal working dilutions should be determined experimentally by the investigator.
Comment:	Antigen size: 550 AA
Restrictions:	For Research Use only

Handling

Format:	Liquid
Concentration:	Lot specific
Buffer:	Liquid. Purified antibody supplied in 1x PBS buffer with 0.09 % (w/v) sodium azide and 2 % sucrose.
Preservative:	Sodium azide
Precaution of Use:	This product contains Sodium azide: a POISONOUS AND HAZARDOUS SUBSTANCE which should be handled by trained staff only.

Handling

Handling Advice:	Avoid repeated freeze-thaw cycles.
Storage:	-20 °C
Storage Comment:	For short term use, store at 2-8°C up to 1 week. For long term storage, store at -20°C in small aliquots to prevent freeze-thaw cycles.

Publications

Product cited in:	Spellman, Ahmed, Dubach, Gardiner: "Expression of trisomic proteins in Down syndrome model systems." in: Gene , Vol. 512, Issue 2, pp. 219-25, (2012) (PubMed).
-------------------	--

Images

SLC22A11



Western Blotting

Image 1. Host: Rabbit Target Name: SLC22A11 Sample Type: Human Adult Placenta Antibody Dilution: 1.0 µg/ml

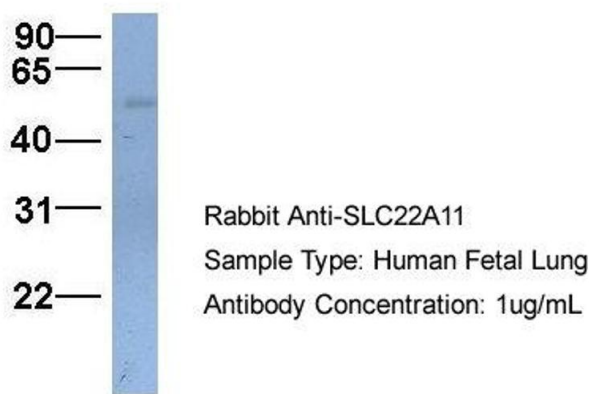
SLC22A11



Western Blotting

Image 2. Host: Rabbit Target Name: SLC22A11 Sample Type: Human Fetal Heart Antibody Dilution: 1.0 µg/ml

SLC22A11



Western Blotting

Image 3. Host: Rabbit Target Name: SLC22A11 Sample
Type: Human Fetal Lung Antibody Dilution: 1.0ug/ml