

Datasheet for ABIN2781667

anti-SLC44A2 antibody (Middle Region)[Go to Product page](#)**1** Image

Overview

Quantity:	100 µL
Target:	SLC44A2
Binding Specificity:	Middle Region
Reactivity:	Human, Rat, Mouse, Cow, Dog, Guinea Pig, Horse, Pig, Rabbit
Host:	Rabbit
Clonality:	Polyclonal
Conjugate:	This SLC44A2 antibody is un-conjugated
Application:	Western Blotting (WB)

Product Details

Immunogen:	The immunogen is a synthetic peptide directed towards the middle region of Human SLC44A2
Sequence:	IMVWVMIMV ILVLGYGIFH CYMEYSRLRG EAGSDVSLVD LGFQTDFRVY
Predicted Reactivity:	Cow: 93%, Dog: 86%, Guinea Pig: 86%, Horse: 93%, Human: 100%, Mouse: 100%, Pig: 93%, Rabbit: 93%, Rat: 100%
Characteristics:	This is a rabbit polyclonal antibody against SLC44A2. It was validated on Western Blot.
Purification:	Affinity Purified

Target Details

Target:	SLC44A2
Alternative Name:	SLC44A2 (SLC44A2 Products)

Target Details

Background: Isoform 1, but not isoform 3, exhibits some choline transporter activity.
Alias Symbols: CTL2, PP1292
Protein Interaction Partner: UBC,
Protein Size: 706

Molecular Weight: 80 kDa

Gene ID: 57153

NCBI Accession: [NM_020428](#), [NP_065161](#)

UniProt: [Q8IWA5](#)

Pathways: [SARS-CoV-2 Protein Interactome](#)

Application Details

Application Notes: Optimal working dilution should be determined by the investigator.

Restrictions: For Research Use only

Handling

Format: Liquid

Concentration: 1 mg/mL

Buffer: Liquid. Purified antibody supplied in 1x PBS buffer with 0.09 % (w/v) sodium azide and 2 % sucrose.

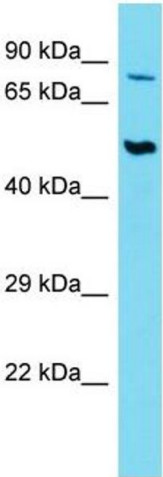
Preservative: Sodium azide

Precaution of Use: This product contains Sodium azide: a POISONOUS AND HAZARDOUS SUBSTANCE which should be handled by trained staff only.

Handling Advice: Avoid repeat freeze-thaw cycles.

Storage: -20 °C

Storage Comment: For short term use, store at 2-8°C up to 1 week. For long term storage, store at -20°C in small aliquots to prevent freeze-thaw cycles.



Western Blotting

Image 1. Host: Rabbit Target Name: SLC44A2 Sample Type: Thymus Tumor lysates Antibody Dilution: 1.0ug/ml