

Datasheet for ABIN2781672

anti-SLC30A1 antibody (Middle Region)**1** Image**1** Publication[Go to Product page](#)

Overview

Quantity:	100 µL
Target:	SLC30A1
Binding Specificity:	Middle Region
Reactivity:	Human, Rat, Dog, Horse, Pig, Rabbit
Host:	Rabbit
Clonality:	Polyclonal
Application:	Western Blotting (WB)

Product Details

Immunogen:	The immunogen is a synthetic peptide directed towards the middle region of human SLC30A1
Sequence:	FCVNPCFPDP CKAFFEIINS THASVYEAGP CWVLYLDPTL CVVMVCILLY
Predicted Reactivity:	Dog: 86%, Horse: 86%, Human: 100%, Pig: 86%, Rabbit: 86%, Rat: 86%
Characteristics:	This is a rabbit polyclonal antibody against SLC30A1. It was validated on Western Blot using a cell lysate as a positive control.
Purification:	Affinity Purified

Target Details

Target:	SLC30A1
Alternative Name:	SLC30A1 (SLC30A1 Products)
Background:	SLC30A1 may be involved in zinc transport out of the cell.

Target Details

	Alias Symbols: ZNT1, ZRC1
	Protein Interaction Partner: UBC, XPO1, SRSF1, ATP6V1B1,
	Protein Size: 507
Molecular Weight:	55 kDa
Gene ID:	7779
NCBI Accession:	NM_021194 , NP_067017
UniProt:	Q9Y6M5
Pathways:	Transition Metal Ion Homeostasis

Application Details

Application Notes:	Optimal working dilutions should be determined experimentally by the investigator.
Comment:	Antigen size: 507 AA
Restrictions:	For Research Use only

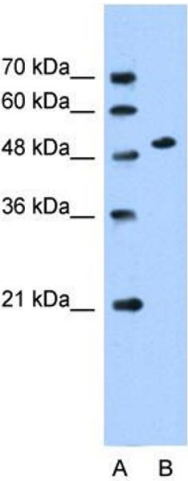
Handling

Format:	Liquid
Concentration:	Lot specific
Buffer:	Liquid. Purified antibody supplied in 1x PBS buffer with 0.09 % (w/v) sodium azide and 2 % sucrose.
Preservative:	Sodium azide
Precaution of Use:	This product contains Sodium azide: a POISONOUS AND HAZARDOUS SUBSTANCE which should be handled by trained staff only.
Handling Advice:	Avoid repeated freeze-thaw cycles.
Storage:	-20 °C
Storage Comment:	For short term use, store at 2-8°C up to 1 week. For long term storage, store at -20°C in small aliquots to prevent freeze-thaw cycles.

Publications

Product cited in:	Bresson, Darolles, Carmona, Gautier, Sage, Roudeau, Ortega, Ansoborlo, Malard: "Cobalt chloride speciation, mechanisms of cytotoxicity on human pulmonary cells, and synergistic
-------------------	--

toxicity with zinc." in: **Metalomics : integrated biometal science**, Vol. 5, Issue 2, pp. 133-43, (2013) ([PubMed](#)).



Western Blotting

Image 1. WB Suggested Anti-SLC30A1 Antibody Titration:
0.2-1 ug/ml Positive Control: HepG2 cell lysate