



[Go to Product page](#)

Datasheet for ABIN2781677
anti-ChT antibody (C-Term)

1 Image

Overview

Quantity:	100 µL
Target:	ChT
Binding Specificity:	C-Term
Reactivity:	Human, Mouse, Rat, Cow, Guinea Pig, Rabbit, Dog, Horse
Host:	Rabbit
Clonality:	Polyclonal
Conjugate:	This ChT antibody is un-conjugated
Application:	Western Blotting (WB)

Product Details

Immunogen:	The immunogen is a synthetic peptide directed towards the C-terminal region of human SLC5A7
Sequence:	ILVKNENIKL DELALVKPRQ SMTLSSTFTN KEAFLDVDSS PEGSGTEDNL
Predicted Reactivity:	Cow: 86%, Dog: 100%, Guinea Pig: 86%, Horse: 93%, Human: 100%, Mouse: 100%, Rabbit: 100%, Rat: 100%
Characteristics:	This is a rabbit polyclonal antibody against SLC5A7. It was validated on Western Blot.
Purification:	Affinity Purified

Target Details

Target:	ChT
---------	-----

Target Details

Alternative Name: [SLC5A7 \(ChT Products\)](#)

Background: This gene encodes a sodium ion- and chloride ion-dependent high-affinity transporter that mediates choline uptake for acetylcholine synthesis in cholinergic neurons. The protein transports choline from the extracellular space into presynaptic terminals for synthesis into acetylcholine. Increased choline uptake results from increased density of this protein in synaptosomal plasma membranes in response to depolarization of cholinergic terminals. Dysfunction of cholinergic signaling has been implicated in various disorders including depression, attention-deficit disorder, and schizophrenia. An allelic variant of this gene is associated with autosomal dominant distal hereditary motor neuronopathy type VIIA. Alternative splicing results in multiple transcript variants.

Alias Symbols: CHT, CHT1, HMN7A

Protein Size: 475

Molecular Weight: 52 kDa

Gene ID: 60482

NCBI Accession: [NM_001305005](#), [NP_001291934](#)

UniProt: [Q9GZV3](#)

Application Details

Application Notes: Optimal working dilution should be determined by the investigator.

Restrictions: For Research Use only

Handling

Format: Liquid

Concentration: 1 mg/mL

Buffer: Liquid. Purified antibody supplied in 1x PBS buffer with 0.09 % (w/v) sodium azide and 2 % sucrose.

Preservative: Sodium azide

Precaution of Use: This product contains Sodium azide: a POISONOUS AND HAZARDOUS SUBSTANCE which should be handled by trained staff only.

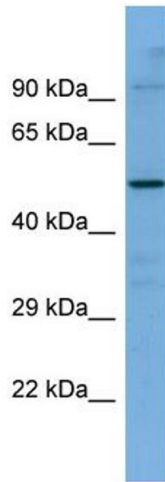
Handling Advice: Avoid repeat freeze-thaw cycles.

Storage: -20 °C

Handling

Storage Comment: For short term use, store at 2-8°C up to 1 week. For long term storage, store at -20°C in small aliquots to prevent freeze-thaw cycles.

Images



Western Blotting

Image 1. Host: Rabbit Target Name: SLC5A7 Sample Type: ACHN Whole Cell lysates Antibody Dilution: 1.0ug/ml